



DA.MA.AN.

La **DA.MA.AN.** è particolarmente lieta di presentare il nuovo catalogo **DIVISIONE ACCIAIO INOX**

In questo catalogo abbiamo illustrato gli articoli di maggior utilizzo nell'impiantistica in genere.

Riteniamo opportuno avvisare la spett.le Clientela che oltre agli articoli presentati, sempre pronti in magazzino, sono disponibili tutti gli articoli del settore, non inserite nel catalogo.

Per qualsiasi informazione tecnica richiedete i cataloghi specifici, i nostri uffici e commerciali, sono sempre a vostra disposizione

AVVERTENZA

N.B. - Tutte le figure, disegni, quote e caratteristiche del presente catalogo, debbono intendersi puramente indicative e non si assume alcuna responsabilità circa l'attendibilità dei dati tecnici ivi esposti.

In caso di ordine si prega di chiedere conferma di tutti quei dati tecnici che l'utente ritiene necessari.

La **DA.MA.AN.** si riserva la facoltà, a suo insindacabile giudizio, di cambiare integralmente o parzialmente sia le dimensioni, sia la forma degli articoli qui elencati e descritti, senza darne alcun preavviso od informare i Sigg. Clienti.

Il Tuo Miglior Partner nelle Forniture


ANALISI CHIMICA	Pag. 3
SPESSORI NOMINALI	Pag. 4
RACCORDERIA FILETTATA INOX AISI 316L	Pag. 6
RACCORDERIA A SALDARE INOX AISI 316L	Pag. 14
VALVOLE A SFERA AISI 316	Pag. 24
VALVOLE A SFERA FLANGIATE IN ACCIAIO	Pag. 26
VALVOLE DI RITEGNO IN ACCIAIO AISI 316	Pag. 27
TUBI SENZA SALDATURA AISI 316L	Pag. 30
TUBI ELETTRONITTI LAMINATI CRUDI AISI 316L	Pag. 32
FLANGE UNI - AISI 316L	Pag. 36
FLANGE - ANSI (ASA) 150 AISI 316L	Pag. 38
FLANGE - ANSI (ASA) 300 AISI 316L	Pag. 44
FLANGE - ANSI (ASA) 600 AISI 316L	Pag. 50

MATERIALI		ANALISI CHIMICI												
DENOMINAZIONE Gr.	ASTM Spec.	C	Mn	Si	P	S	Cr	Ni	Mo	Fe	Cu	Co	Al	Altri elementi
		% max.	% max.	% max.	% max.	% max.	%	%	%	%	% max.	% max.	%	%
304	•						:	8÷10,5		Resto Balance				
304 L							:	8÷12		Resto Balance				
321	•						:	9÷12		Resto Balance				
347	•						:	9÷13		Resto Balance				5x%C ≤ Ti ≤ 0,70
316	□						:	10÷14	:	Resto Balance				10x%C ≤ Cb+Ta ≤ 1,1
316 L	□						:	10÷14	:	Resto Balance				
316 Ti	□						:	10÷14	:	Resto Balance				
317							:	11÷15	:	Resto Balance				5x%C ≤ Ti ≤ 0,70
317 L							:	11÷15	:	Resto Balance				
309 S							:	12÷15		Resto Balance				
310 S							:	19÷22		Resto Balance				
410 S							:	0,60		Resto Balance				
430							:	0,75		Resto Balance				
253 MA				1,4÷2,0			:	10÷12		Resto Balance				
2205							:	4,5÷6,5	:	Resto Balance				N 0,14÷0,20
904 L							:	23÷28	:	Resto Balance	1÷2			N 0,08÷0,20
NICKEL 200							:	98,4÷99,6		0,40 max	0,25			
NICKEL 201							:	98,4÷99,6		0,40 max	0,25			
MONEL 400							:	63÷70		Resto Balance				
INCONEL 600							:	72 min		6÷10	0,50			
INCONEL 601							:	60,5		Resto Balance	1,00		1,35	
INCOLOY 800							:	30÷35		Resto Balance	0,75		0,15÷0,60	Ti 0,15÷0,60
INCOLOY 825							:	38÷46	:	Resto Balance	1,5÷3		0,2	Ti 0,6÷1,2
INCOLOY DS			0,8÷1,5	1,9÷2,6			:	34÷41		Resto Balance	0,50			Ti 0,2 max
HASTELLOY B2							:	Resto Balance	:	2,00 max	-	1,00		V 0,2÷0,4
HASTELLOY C4							:	Resto Balance	:	3,00 max	-	2,00		Ti 0,7 max
HASTELLOY C276							:	Resto Balance	:	4÷7	-	2,50		V 0,35-W3÷4,5
TITANIO Gr. 2		C	N	H	O	Fe	Ti	Ni						
		% max.	% max.	% max.	% max.	% max.	Resto Balance	% max.						
								0,1						

• 304 H - 321 H - 347 H - 316 H - 316 Ti H per (for) 0,04% C % 0,10-0,16 Mo Sup - 316 L Mo Sup - 316 Ti Mo Sup per (for) 2,5 ≤ Mo % 3




pollici	mm	SCH 5S	SCH 10S	SCH 10	SCH 20	SCH 30	SCH 40S	Std Weight	SCH 40	SCH 60	SCH 80S	Extra Strong	SCH 80	SCH 100	SCH 120	SCH 140	SCH 160	Double Extra Strong	mm	pollici
1/2	21,34	1,65	2,11				2,77	2,77	2,77		3,73	3,73	3,73				4,77	7,47	21,34	1/2
3/4	26,67	1,65	2,11	2,11			2,87	2,87	2,87		3,91	3,91	3,91				5,56	7,82	26,67	3/4
1	33,40	1,65	2,77	2,77			3,38	3,38	3,38		4,55	4,55	4,55				6,35	9,09	33,40	1
1 1/4	42,16	1,65	2,77	2,77			3,56	3,56	3,56		4,85	4,85	4,85				6,35	9,70	42,16	1 1/4
1 1/2	48,26	1,65	2,77	2,77			3,68	3,68	3,68		5,08	5,08	5,08				7,14	10,16	48,26	1 1/2
2	60,32	1,65	2,77	2,77			3,91	3,91	3,91		5,54	5,54	5,54				8,74	11,07	60,32	2
2 1/2	73,02	2,11	3,05	3,05			5,16	5,16	5,16		7,01	7,01	7,01				9,52	14,02	73,02	2 1/2
3	88,90	2,11	3,05	3,05			5,49	5,49	5,49		7,62	7,62	7,62				11,12	15,24	88,90	3
3 1/2	101,60	2,11	3,05	3,05			5,74	5,74	5,74		8,08	8,08	8,08				11,12	16,15	101,60	3 1/2
4	114,30	2,11	3,05	3,05			6,02	6,02	6,02		8,56	8,56	8,56				13,49	17,12	114,30	4
5	141,30	2,77	3,40	3,40			6,55	6,55	6,55		9,52	9,52	9,52				15,87	19,05	141,30	5
6	168,27	2,77	3,40				7,11	7,11	7,11		10,97	10,97	10,97				18,26	21,95	168,27	6
8	219,07	2,77	3,76				8,18	8,18	8,18	10,31	12,70	12,70	12,70				23,01	22,22	219,07	8
10	273,05	3,40	4,19				9,27	9,27	9,27	12,70	12,70	12,70	12,70				28,57	25,40	273,05	10
12	323,85	3,96	4,57				9,52	9,52	10,31	14,27	12,70	12,70	12,70				33,32	25,40	323,85	12
14	355,60	3,96	4,77	6,35	7,92	9,52		9,52	11,12	15,09			12,70	19,05			35,71		355,60	14
16	406,40	4,19	4,77	6,35	7,92	9,52		9,52	12,70	16,66			12,70	21,44			40,49		406,40	16
18	457,20	4,19	4,77	6,35	7,92	11,12		9,52	14,27	19,05			12,70	23,82			45,24		457,20	18
20	508,00	4,77	5,54	6,35	9,52	12,70		9,52	15,08	20,62			12,70	26,19			50,01		508,00	20
22	558,80	4,77	5,54	6,35	9,52	12,70		9,52	15,87	22,22			12,70	28,57			53,97		558,80	22
24	609,60	5,54	6,35	6,35	9,52	14,27		9,52	17,47	24,61			12,70	30,96			59,54		609,60	24
26	660,40			7,92	12,70			9,52					12,70						660,40	26
28	711,20			7,92	12,70	15,87		9,52					12,70						711,20	28
30	762,00	6,35	7,92	7,92	12,70	15,87		9,52					12,70						762,00	30
32	812,80			7,92	12,70	15,87		9,52	17,47				12,70						812,80	32
34	863,60			7,92	12,70	15,87		9,52	17,47				12,70						863,60	34
36	914,40			7,92	12,70	15,87		9,52	19,05				12,70						914,40	36

GOMITO 90° F.F. DA.MA.AN.	GAS	CODICE
		1/8"
	1/4"	EB31609002
	3/8"	EB31609003
	1/2"	EB31609004
	3/4"	EB31609005
	1"	EB31609006
	1" 1/4"	EB31609007
	1" 1/2"	EB31609008
	2"	EB31609009
	2" 1/2"	EB31609010
	3"	EB31609011
	4"	EB31609012

GOMITO 45° F.F. DA.MA.AN.	GAS	CODICE
		1/8"
	1/4"	EB31612102
	3/8"	EB31612103
	1/2"	EB31612104
	3/4"	EB31612105
	1"	EB31612106
	1" 1/4"	EB31612107
	1" 1/2"	EB31612108
	2"	EB31612109
	2" 1/2"	EB31612110
	3"	EB31612111

GOMITO 90° M.F. DA.MA.AN.	GAS	CODICE
		1/8"
	1/4"	EB31609202
	3/8"	EB31609203
	1/2"	EB31609204
	3/4"	EB31609205
	1"	EB31609206
	1" 1/4"	EB31609207
	1" 1/2"	EB31609208
	2"	EB31609209
	2" 1/2"	EB31609210
	3"	EB31609211

TEE FEMMINA DA.MA.AN.	GAS	CODICE
		1/8"
	1/4"	EB31613002
	3/8"	EB31613003
	1/2"	EB31613004
	3/4"	EB31613005
	1"	EB31613006
	1" 1/4"	EB31613007
	1" 1/2"	EB31613008
	2"	EB31613009
	2" 1/2"	EB31613010
	3"	EB31613011
	4"	EB31613012



DA.MA.AN.

RACCORDERIA FILETTATA INOX AISI 316

VITE DOPPIA DA.MA.AN.



GAS	CODICE
1/8"	EB31628001
1/4"	EB31628002
3/8"	EB31628003
1/2"	EB31628004
3/4"	EB31628005
1"	EB31628006
1" 1/4	EB31628007
1" 1/2	EB31628008
2"	EB31628009
2" 1/2	EB31628010
3"	EB31628011
4"	EB31628012

VITE DOPPIA RIDOTTA DA.MA.AN.



D1	D2	CODICE
1/4"	1/8"	EB31624513
3/8"	1/8"	EB31624514
3/8"	1/4"	EB31624515
1/2"	1/4"	EB31624516
1/2"	3/8"	EB31624517
3/4"	3/8"	EB31624519
3/4"	1/2"	EB31624520
1"	3/8"	EB31624522
1"	1/2"	EB31624523
1"	3/4"	EB31624524
1" 1/4	1/2"	EB31624526
1" 1/4	3/4"	EB31624527
1" 1/4	1"	EB31624528
1" 1/2	3/4"	EB31624531
1" 1/2	1"	EB31624532
1" 1/2	1" 1/4	EB31624533
2"	1"	EB31624537
2"	1" 1/4	EB31624538
2"	1" 1/2	EB31624539
2" 1/2	2"	EB31624544

CROCE FEMMINA DA.MA.AN.



GAS	CODICE
1/8"	EB31618001
1/4"	EB31618002
3/8"	EB31618003
1/2"	EB31618004
3/4"	EB31618005
1"	EB31618006
1" 1/4	EB31618007
1" 1/2	EB31618008
2"	EB31618009
2" 1/2	EB31618010
3"	EB31618011

RACCORDERIA FILETTATA INOX AISI 316

CURVE DI SORPASSO

DA.MA.AN.



GAS	CODICE
3/8"	EB31608503
1/2"	EB31608504
3/4"	EB31608505
1"	EB31608506
1" 1/4	EB31608507

MANICOTTO

RIDOTTO F.F.

DA.MA.AN.



D1	D2	CODICE
1/4"	1/8"	EB31614013
3/8"	1/4"	EB31614015
1/2"	3/8"	EB31614017
3/4"	1/2"	EB31614020
1"	3/4"	EB31614024
1" 1/4	1"	EB31614028
1" 1/2	1" 1/4	EB31614033
2"	1" 1/2	EB31614039

RIDUZIONE M.F.

DA.MA.AN.



D1	D2	CODICE
1/4"	1/8"	EB31624113
3/8"	1/8"	EB31624114
3/8"	1/4"	EB31624115
1/2"	1/4"	EB31624116
1/2"	3/8"	EB31624117
3/4"	3/8"	EB31624119
3/4"	1/2"	EB31624120
1"	1/2"	EB31624123
1"	3/4"	EB31624124
1" 1/4	1/2"	EB31624126
1" 1/4	3/4"	EB31624127
1" 1/4	1"	EB31624128
1" 1/2	3/4"	EB31624131
1" 1/2	1"	EB31624132
1" 1/2	1" 1/4	EB31624133
2"	3/4"	EB31624136
2"	1"	EB31624137
2"	1" 1/4	EB31624138
2"	1" 1/2	EB31624139
2" 1/2	1"	EB31624141
2" 1/2	1" 1/4	EB31624142
2" 1/2	1" 1/2	EB31624143
2" 1/2	2"	EB31624144
3"	1" 1/2	EB31624147
3"	2"	EB31624148
3"	2" 1/2	EB31624149



DA.MA.AN.

RACCORDERIA FILETTATA INOX AISI 316

TAPPO MASCHIO, TESTA QUADRA DA.MA.AN.



GAS	CODICE
1/8"	EB31629101
1/4"	EB31629102
3/8"	EB31629103
1/2"	EB31629104
3/4"	EB31629105
1"	EB31629106
1" 1/4	EB31629107
1" 1/2	EB31629108
2"	EB31629109
2" 1/2	EB31629110
3"	EB31629111

TAPPO MASCHIO, TESTA ESAGONALE DA.MA.AN.



GAS	CODICE
1/8"	EB31629201
1/4"	EB31629202
3/8"	EB31629203
1/2"	EB31629204
3/4"	EB31629205
1"	EB31629206
1" 1/4	EB31629207
1" 1/2	EB31629208
2"	EB31629209
2" 1/2	EB31629210
3"	EB31629211
4"	EB31629212

CALOTTA ESAGONALE DA.MA.AN.



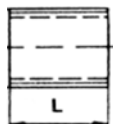
GAS	CODICE
1/8"	EB31630001
1/4"	EB31630002
3/8"	EB31630003
1/2"	EB31630004
3/4"	EB31630005
1"	EB31630006
1" 1/4	EB31630007
1" 1/2	EB31630008
2"	EB31630009
2" 1/2	EB31630010
3"	EB31630011
4"	EB31630012

CONTRODADO DA.MA.AN.



GAS	CODICE
1/8"	EB31631001
1/4"	EB31631002
3/8"	EB31631003
1/2"	EB31631004
3/4"	EB31631005
1"	EB31631006
1" 1/4	EB31631007
1" 1/2	EB31631008
2"	EB31631009

NIPLO SEMPLICE DA.MA.AN.




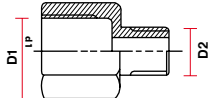
GAS	L	CODICE
1/4"	18	EB31653102
3/8"	22	EB31653103
1/2"	25	EB31653104
3/4"	30	EB31653105
1"	35	EB31653106
1" 1/4	38	EB31653107
1" 1/2	38	EB31653108
2"	45	EB31653109
2" 1/2	55	EB31653110
3"	60	EB31653111
4"	70	EB31653112

RACCORDERIA FILETTATA INOX AISI 316

GIUNTO A 3 PEZZI M.F. DA.MA.AN.	GAS	CODICE
		1/8"
	1/4"	EB31634102
	3/8"	EB31634103
	1/2"	EB31634104
	3/4"	EB31634105
	1"	EB31634106
	1" 1/4	EB31634107
	1" 1/2	EB31634108
	2"	EB31634109
	2" 1/2	EB31634110
	3"	EB31634111

GIUNTO A 3 PEZZI A SALDARE A TASCA DA.MA.AN.	GAS	CODICE
		1/8"
	1/4"	EB316340S02
	3/8"	EB316340S03
	1/2"	EB316340S04
	3/4"	EB316340S05
	1"	EB316340S06
	1" 1/4	EB316340S07
	1" 1/2	EB316340S08
	2"	EB316340S09
	2" 1/2	EB316340S10
	3"	EB316340S11

GIUNTO A 3 PEZZI F.F. DA.MA.AN.	GAS	CODICE
		1/8"
	1/4"	EB31634002
	3/8"	EB31634003
	1/2"	EB31634004
	3/4"	EB31634005
	1"	EB31634006
	1" 1/4	EB31634007
	1" 1/2	EB31634008
	2"	EB31634009
	2" 1/2	EB31634010
	3"	EB31634011
	4"	EB31634012

PROLUNGA DA.MA.AN.	D1	D2	CODICE
		1/4"	1/8"
	3/8"	1/4"	EB31614613
	1/4"	1/4"	EB31614615
	3/8"	3/8"	EB31614603
	1/2"	3/8"	EB31614617
	1/2"	1/2"	EB31614604
	3/4"	1/2"	EB31614620
	3/4"	3/4"	EB31614605
	1"	3/4"	EB31614624
	1"	1"	EB31614606

MANICOTTO DA.MA.AN.	GAS	CODICE
		1/8"
	1/4"	EB31627002
	3/8"	EB31627003
	1/2"	EB31627004
	3/4"	EB31627005
	1"	EB31627006
	1" 1/4	EB31627007
	1" 1/2	EB31627008
	2"	EB31627009
	2" 1/2	EB31627010
	3"	EB31627011
	4"	EB31627012


MEZZO MANICOTTO DA.MA.AN.	GAS	CODICE
		1/8"
	1/4"	EB31616802
	3/8"	EB31616803
	1/2"	EB31616804
	3/4"	EB31616805
	1"	EB31616806
	1" 1/4	EB31616807
	1" 1/2	EB31616808
	2"	EB31616809
	2" 1/2	EB31616810
	3"	EB31616811
	4"	EB31616812





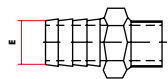
DA.MA.AN.

RACCORDERIA FILETTATA INOX AISI 316

RACCORDERIA FILETTATA INOX AISI 316

BARILOTTO DA.MA.AN.	GAS	L	CODICE
		1/8"	35
	1/4"	40	EB31653002
	3/8"	40	EB31653003
	1/2"	60	EB31653004
	3/4"	60	EB31653005
	1"	60	EB31653006
	1" 1/4	80	EB31653007
	1" 1/2	80	EB31653008
	2"	100	EB31653009
	2" 1/2	100	EB31653010
	3"	120	EB31653011
	4"	120	EB31653012

TRONCHETTI DA.MA.AN.	GAS	L	CODICE
		1/8"	30
	1/4"	30	EB31660002
	3/8"	30	EB31660003
	1/2"	35	EB31660004
	3/4"	40	EB31660005
	1"	40	EB31660006
	1" 1/4	50	EB31660007
	1" 1/2	50	EB31660008
	2"	50	EB31660009
	2" 1/2	60	EB31660010
	3"	70	EB31660011
	4"	80	EB31660012

PORTAGOMMA M. DA.MA.AN.	GAS	E	CODICE
		1/8"	7
	1/4"	9	EB31634402
	3/8"	9	EB31634403
	1/2"	14	EB31634404
	3/4"	20	EB31634405
	1"	27	EB31634406
	1" 1/4	33	EB31634407
	1" 1/2	40	EB31634408
	2"	51	EB31634409
			



**CURVE A SALDARE
RICAVATE DA TUBO
SALDATO D 3 90°**

DA.MA.AN.



**A richiesta
diametri superiori**

DN	GAS	De	S	CODICE
15	1/2"	21,3	2	EB316CUR021
			3	
20	3/4"	26,9	2	EB316CUR026
			3	
25	1"	33,7	2	EB316CUR033
			3	EB316CUR3033
32	1" 1/4	42,4	2	EB316CUR042
			3	EB316CUR3042
40	1" 1/2	48,3	2	EB316CUR048
			3	EB316CUR3048
50	2"	60,3	2	EB316CUR060
			3	EB316CUR3060
65	2" 1/2	76,1	2	EB316CUR076
			3	EB316CUR3076
80	3"	88,9	2	EB316CUR088
			3	EB316CUR3088
	3" 1/2	101,6	2	EB316CUR101
			3	EB316CUR3101
100	4"	114,3	2	EB316CUR114
			3	EB316CUR3114
125	5"	139,7	2	EB316CUR139
			3	EB316CUR3139
150	6"	168,3	2	EB316CUR168
			3	EB316CUR3168
200	8"	219,1	2	EB316CUR219
			3	EB316CUR3219
250	10"	273	2	EB316CUR273
			3	EB316CUR3273
300	12"	323	2	EB316CUR323
			3	EB316CUR3323
350	14"	355	2	
			3	EB316CUR3355
400	16"	406	2	
			3	EB316CUR3406

DN	GAS	De	STD	CODICE	XS	CODICE
			S		S	
15	1/2"	21,3	2,77	EB316CURS4021	3,73	EB316CURS8021
20	3/4"	26,9	2,87	EB316CURS4026	3,91	EB316CURS8026
25	1"	33,7	3,38	EB316CURS4033	4,55	EB316CURS8033
32	1" 1/4	42,4	3,56	EB316CURS4042	4,85	EB316CURS8042
40	1" 1/2	48,3	3,68	EB316CURS4048	5,08	EB316CURS8048
50	2"	60,3	3,91	EB316CURS4060	5,54	EB316CURS8060
65	2" 1/2	73,0	5,16	EB316CURS4076	7,01	EB316CURS8076
80	3"	88,9	5,49	EB316CURS4088	7,62	EB316CURS8088
			5,74	EB316CURS4101	8,08	EB316CURS8101
100	4"	114,3	6,02	EB316CURS4114	8,56	EB316CURS8114
125	5"	139,7	6,55	EB316CURS4139	9,52	EB316CURS8139
150	6"	168,3	7,11	EB316CURS4168	10,97	EB316CURS8168
200	8"	219,1	8,18	EB316CURS4219	12,70	EB316CURS8219
250	10"	273	9,27	EB316CURS4273	12,70	EB316CURS8273
300	12"	323,8	9,52	EB316CURS4323	12,70	EB316CURS8323



DA.MA.AN.

RACCORDERIA A SALDARE INOX AISI 316

RACCORDERIA A SALDARE INOX AISI 316

RIDUZIONI
CONCENTRICHE
RICAVATE DA
TUBO SALDATO
DA.MA.AN.



D	d	s	CODICE
26,9	17,2	2	EB316R026017
	21,3	2	EB316R026021
33,7	17,2	2	EB316R033017
	21,3	2	EB316R033021
	26,9	2	EB316R033026
42,4	21,3	2	EB316R042021
	26,9	2	EB316R042026
	33,7	2	EB316R042033
48,3	21,3	2	EB316R048021
	26,9	2	EB316R048026
	33,7	2	EB316R048033
	42,4	2	EB316R048042
60,3	21,3	2	EB316R060021
	26,9	2	EB316R060026
	33,7	2	EB316R060033
	42,4	2	EB316R060042
76,1	48,3	2	EB316R060048
	26,9	2	EB316R076026
	33,7	2	EB316R076033
	42,4	2	EB316R076042
88,9	48,3	2	EB316R076048
	60,3	2	EB316R076060
	33,7	2	EB316R088033
	42,4	2	EB316R088042
101,6	48,3	2	EB316R088048
	60,3	2	EB316R088060
	76,1	2	EB316R088076
	60,3	2	EB316R101060
114,3	76,1	2	EB316R101076
	88,9	2	EB316R101088
	33,7	2	EB316R114033
139,7	42,4	2	EB316R114042
	48,3	2	EB316R114048
	60,3	2	EB316R114060
	76,1	2	EB316R114076
	88,9	2	EB316R114088
	101,6	2	EB316R114101
	48,3	2	EB316R139048
168,3	60,3	2	EB316R139060
	76,1	2	EB316R139076
	88,9	2	EB316R139088
	101,6	2	EB316R139101
	114,3	2	EB316R139114
219,1	48,3	2	EB316R168048
	60,3	2	EB316R168060
	76,1	2	EB316R168076
	88,9	2	EB316R168088
	101,6	2	EB316R168101
273	114,3	2	EB316R168114
	139,7	2	EB316R168139
	88,9	2	EB316R219088
	114,3	2	EB316R219114
273	139,7	2	EB316R219139
	168,3	2	EB316R219168
	114,3	2	EB316R273114
	139,7	2	EB316R273139
273	168,3	2	EB316R273168
	219,1	2	EB316R273219

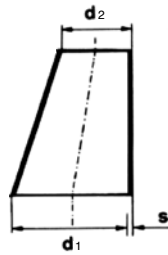
Segue →



**RIDUZIONI CONCENTRICHE
RICAIVATE DA TUBO
SENZA SALDATURA - SCHEDULE**


DA.MA.AN.

D	d	GAS	SCH. STD		CODICE	SCH. XS		CODICE
			S	S ₁		S	S ₁	
26,7	21,3	3/4" x 1/2"	2,87	2,77	EB316R4026021	3,91	3,73	EB316R8026021
33,4	26,7	1" x 3/4"	3,38	2,87	EB316R4033026	4,55	3,91	EB316R8033026
33,4	21,3	1" x 1/2"	3,38	2,77	EB316R4033021	4,55	3,73	EB316R8033021
42,2	33,4	1 1/4" x 1"	3,56	3,38	EB316R4042033	4,85	4,55	EB316R8042033
42,2	26,7	1 1/4" x 3/4"	3,56	2,87	EB316R4042026	4,85	3,91	EB316R8042026
42,2	21,3	1 1/4" x 1/2"	3,56	2,77	EB316R4042021	4,85	3,73	EB316R8042021
48,3	42,2	1 1/2" x 1 1/4"	3,68	3,56	EB316R4048042	5,08	4,85	EB316R8048042
48,3	33,4	1 1/2" x 1"	3,68	3,38	EB316R4048033	5,08	4,55	EB316R8048033
48,3	26,7	1 1/2" x 3/4"	3,68	2,87	EB316R4048026	5,08	3,91	EB316R8048026
48,3	21,3	1 1/2" x 1/2"	3,68	2,77	EB316R4048021	5,08	3,73	EB316R8048021
60,3	48,3	2" x 1 1/2"	3,91	3,68	EB316R4060048	5,54	5,08	EB316R8060048
60,3	42,2	2" x 1 1/4"	3,91	3,56	EB316R4060042	5,54	4,85	EB316R8060042
60,3	33,4	2" x 1"	3,91	3,38	EB316R4060033	5,54	4,55	EB316R8060033
60,3	26,7	2" x 3/4"	3,91	2,87	EB316R4060026	5,54	3,91	EB316R8060026
60,3	21,3	2" x 1/2"	3,91	2,77	EB316R4060021	5,54	3,73	EB316R8060021
73,0	60,3	2 1/2" x 2"	5,16	3,91	EB316R4076060	7,01	5,54	EB316R8076060
73,0	48,3	2 1/2" x 1 1/2"	5,16	3,68	EB316R4076048	7,01	5,08	EB316R8076048
73,0	42,2	2 1/2" x 1 1/4"	5,16	3,56	EB316R4076042	7,01	4,85	EB316R8076042
73,0	33,4	2 1/2" x 1"	5,16	3,38	EB316R4076033	7,01	4,55	EB316R8076033
88,9	73,0	3" x 2 1/2"	5,49	5,16	EB316R4088076	7,62	7,01	EB316R8088076
88,9	60,3	3" x 2"	5,49	3,91	EB316R4088060	7,62	5,54	EB316R8088060
88,9	48,3	3" x 1 1/2"	5,49	3,68	EB316R4088048	7,62	5,08	EB316R8088048
88,9	42,2	3" x 1 1/4"	5,49	3,56	EB316R4088042	7,62	4,85	EB316R8088042
88,9	33,4	3" x 1"	5,49	3,38	EB316R4088033	7,62	4,55	EB316R8088033
101,6	88,9	3 1/2" x 3"	5,74	5,49	EB316R4101088	8,08	7,62	EB316R8101088
101,6	73,0	3 1/2" x 2 1/2"	5,74	5,16	EB316R4101076	8,08	7,01	EB316R8101076
101,6	60,3	3 1/2" x 2"	5,74	3,91	EB316R4101060	8,08	5,54	EB316R8101060
101,6	48,3	3 1/2" x 1 1/2"	5,74	3,68	EB316R4101048	8,08	5,08	EB316R8101048
101,6	42,2	3 1/2" x 1 1/4"	5,74	3,56	EB316R4101042	8,08	4,85	EB316R8101042
114,3	101,6	4" x 3 1/2"	6,02	5,74	EB316R4114101	8,56	8,08	EB316R8114101
114,3	88,9	4" x 3"	6,02	5,49	EB316R4114088	8,56	7,62	EB316R8114088
114,3	73,0	4" x 2 1/2"	6,02	5,16	EB316R4114076	8,56	7,01	EB316R8114076
114,3	60,3	4" x 2"	6,02	3,91	EB316R4114060	8,56	5,54	EB316R8114060
114,3	48,3	4" x 1 1/2"	6,02	3,68	EB316R4114048	8,56	5,08	EB316R8114048
114,3	42,2	4" x 1 1/4"	6,02	3,56	EB316R4114042	8,56	4,85	EB316R8114042
114,3	33,4	4" x 1"	6,02	3,38	EB316R4114033	8,56	4,55	EB316R8114033



RIDUZIONE
ECCENTRICA
DA.MA.AN.

d1 x d2	DN x DN	GAS	s	CODICE
21,3 17,2	15 x 10	1/2" x 3/8"	2	EB316E021017
26,9 21,3	20 x 15	3/4" x 1/2"	2	EB316E026021
33,7 21,3	25 x 15	1" x 1/2"	2	EB316E033021
	25 x 20	1" x 3/4"	2	EB316E033026
42,4 26,9	32 x 20	1" 1/4 x 3/4"	2	EB316E042026
	32 x 25	1" 1/4 x 1"	2	EB316E042033
48,3 26,9	40 x 20	1" 1/2 x 3/4"	2	EB316E048026
	40 x 25	1" 1/2 x 1"	2	EB316E048033
	40 x 32	1" 1/2 x 1" 1/4	2	EB316E048042
60,3 33,7	50 x 25	2" x 1"	2	EB316E060033
	50 x 32	2" x 1" 1/4	2	EB316E060042
	50 x 40	2" x 1" 1/2	2	EB316E060048
76,1 48,3	65 x 40	2" 1/2 x 1" 1/2	2	EB316E076048
	65 x 50	2" 1/2 x 2"	2	EB316E076060
88,9 48,3	80 x 40	3" x 1" 1/2	2	EB316E088048
	80 x 50	3" x 2"	2	EB316E088060
	80 x 65	3" x 2" 1/2	2	EB316E088076
114,3 60,3	100 x 50	4" x 2"	2	EB316E114060
	100 x 65	4" x 2" 1/2	2	EB316E114076
	100 x 80	4" x 3"	2	EB316E114088
	101,6	4" x 3" 1/2	2	EB316E114101
139,7 114,3	125 x 100	5" x 4"	2	EB316E139114
168,3 114,3	150 x 100	6" x 4"	2	EB316E168114
	150 x 125	6" x 5"	2	EB316E168139
219,1 168,3	200 x 150	8" x 6"	2	EB316E219168

<p style="text-align: center;">TEE</p> <p style="text-align: center;">DA.MA.AN.</p> 	DN	d	De	S	CODICE
	15	1/2"	21,3	2,0	EB316TEE021
	20	3/4"	26,9	2,0	EB316TEE026
	25	1"	33,7	2,0	EB316TEE033
	32	1" 1/4	42,4	2,0	EB316TEE042
	40	1" 1/2	48,3	2,0	EB316TEE048
	50	2"	60,3	2,0	EB316TEE060
	65	2" 1/2	76,1	2,5	EB316TEE076
	80	3"	88,9	2,5	EB316TEE088
	100	4"	114,3	2,6	EB316TEE114

DN	GAS	De	STD	CODICE	XS	CODICE
			S		S	
15	1/2"	21,3	2,77	EB316TEES4021	3,73	EB316TEES8021
20	3/4"	26,9	2,87	EB316TEES4026	3,91	EB316TEES8026
25	1"	33,7	3,38	EB316TEES4033	4,55	EB316TEES8033
32	1" 1/4	42,4	3,56	EB316TEES4042	4,85	EB316TEES8042
40	1" 1/2	48,3	3,68	EB316TEES4048	5,08	EB316TEES8048
50	2"	60,3	3,91	EB316TEES4060	5,54	EB316TEES8060
65	2" 1/2	73,0	5,16	EB316TEES4076	7,01	EB316TEES8076
80	3"	88,9	5,49	EB316TEES4088	7,62	EB316TEES8088
	3" 1/2	101,6	5,74	EB316TEES4101	8,08	EB316TEES8101
100	4"	114,3	6,02	EB316TEES4114	8,56	EB316TEES8114

CARTELLE DI
APPOGGIO
DA.MA.AN.



DN	GAS	d	s	CODICE
10	3/8"	17,2	2	EB316CAR017
			3	EB316CAR3017
15	1/2"	21,3	2	EB316CAR021
			3	EB316CAR3021
20	3/4"	26,9	2	EB316CAR026
			3	EB316CAR3026
25	1"	33,7	2	EB316CAR033
			3	EB316CAR3033
32	1" 1/4	42,4	2	EB316CAR042
			3	EB316CAR3042
40	1" 1/2	48,3	2	EB316CAR048
			3	EB316CAR3048
50	2"	60,3	2	EB316CAR060
			3	EB316CAR3060
65	2" 1/2	76,1	2	EB316CAR076
			3	EB316CAR3076
80	3"	88,9	2	EB316CAR088
			3	EB316CAR3088
	3" 1/2	101,6	2	EB316CAR101
			3	EB316CAR3101
100	4"	114,3	2	EB316CAR114
			3	EB316CAR3114
125	5"	139,7	2	EB316CAR139
			3	EB316CAR3139
150	6"	168,3	2	EB316CAR168
			3	EB316CAR3168
200	8"	219,1	2	EB316CAR219
			3	EB316CAR3219
250	10"	273	2	EB316CAR273
			3	EB316CAR3273
300	12"	323,8	2	EB316CAR323
			3	EB316CAR3323
350	14"	355,6	2	EB316CAR355
			3	EB316CAR3355
400	16"	406,4	2	EB316CAR406
			3	EB316CAR3406
450	18"	457,2	2	EB316CAR457
			3	EB316CAR3457

**FONDELLI
BOMBATI**
DA.MA.AN.



DN	GAS	ø EST.	S	CODICE
15	1/2"	21,3	2	EB316FO021
20	3/4"	26,9	2	EB316FO026
25	1"	33,7	2	EB316FO033
32	1" 1/4	42,4	2	EB316FO042
40	1" 1/2	48,3	2	EB316FO048
50	2"	60,3	2	EB316FO060
65	2" 1/2	76,1	2	EB316FO076
80	3"	88,9	2	EB316FO088
	3" 1/2	101,6	2	EB316FO101
		108	2	EB316FO108
100	4"	114,3	2	EB316FO114
125	5"	139,7	2	EB316FO139
150	6"	168,3	2	EB316FO168
200	8"	219,1	2	EB316FO219
250	10"	273	2	EB316FO273
300	12"	323,8	2	EB316FO323
350	14"	355,6	3	EB316FO355
400	16"	406,4	3	EB316FO406

DN	GAS	De	STD	CODICE	XS	CODICE
			S		S	
15	1/2"	21,3	2,77	EB316FOS4021	3,73	EB316FOS8021
20	3/4"	26,9	2,87	EB316FOS4026	3,91	EB316FOS8026
25	1"	33,7	3,38	EB316FOS4033	4,55	EB316FOS8033
32	1" 1/4	42,4	3,56	EB316FOS4042	4,85	EB316FOS8042
40	1" 1/2	48,3	3,68	EB316FOS4048	5,08	EB316FOS8048
50	2"	60,3	3,91	EB316FOS4060	5,54	EB316FOS8060
65	2" 1/2	73,0	5,16	EB316FOS4076	7,01	EB316FOS8076
80	3"	88,9	5,49	EB316FOS4088	7,62	EB316FOS8088
	3" 1/2	101,6	5,74	EB316FOS4101	8,08	EB316FOS8101
100	4"	114,3	6,02	EB316FOS4114	8,56	EB316FOS8114



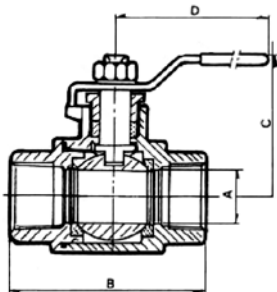
DA.MA.AN.

VALVOLE A SFERA AISI 316

VALVOLE A SFERA 2 PEZZI PASSAGGIO TOTALE

IN ACCIAIO

DA.MA.AN.

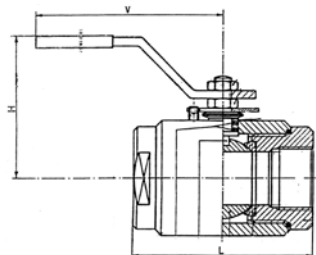


DN	GAS	A	B	C	D	CODICE
8	1/4"	11,1	55	47	98,5	VA704002
10	3/8"	12,7	55	47	98,5	VA704003
15	1/2"	15	60	50	98,5	VA704004
20	3/4"	20	75	55	125	VA704005
25	1"	25	83	60,5	143	VA704006
32	1" 1/4	31,8	97	65,5	143	VA704007
40	1" 1/2	38	109	80	188	VA704008
50	2"	50	129	89	188	VA704009
65	2" 1/2	65	166	126	295	VA704010
80	3"	80	194	140	295	VA704011

VALVOLA A SFERA MONOBLOCCO A PASSAGGIO TOTALE

IN ACCIAIO

DA.MA.AN.

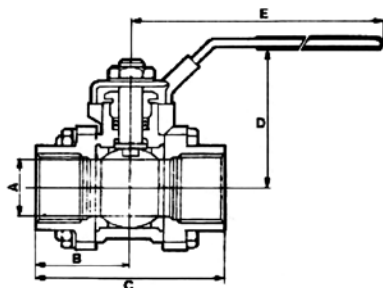


DN	GAS	H	L	V	CODICE
10	3/8"	65	65	130	VA750003
15	1/2"	70	75	130	VA750004
20	3/4"	85	90	180	VA750005
25	1"	85	100	180	VA750006
32	1" 1/4	100	120	280	VA750007
40	1" 1/2	110	128	280	VA750008
50	2"	115	150	280	VA750009
65	2" 1/2	145	160	355	VA750010
80	3"	150	203	355	VA750011
100	4"	165	227	410	VA750012

* PER ALTE PRESSIONI

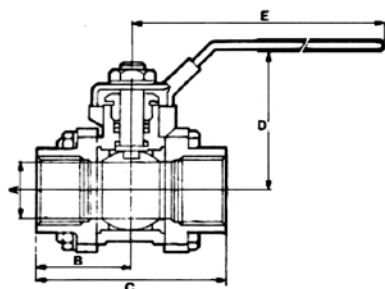
VALVOLE A SFERA AISI 316

**VALVOLE A SFERA
TRE PEZZI PASSAGGIO TOTALE
IN ACCIAIO
DA.MA.AN.**



DN	GAS	A	B	C	D	E	CODICE
8	1/4"	11,6	26,5	53	48	98,5	VA740002
10	3/8"	12,7	26,5	53	48	98,5	VA740003
15	1/2"	15	31	62	54	98,5	VA740004
20	3/4"	20	38,5	77	59	126	VA740005
25	1"	25,4	42,5	85	75	143	VA740006
32	1" 1/4	32	50,5	101	80	143	VA740007
40	1" 1/2	38,1	56,5	113	85	188	VA740008
50	2"	50,8	65	130	95	188	VA740009
65	2" 1/2	65	77,5	155	133	295	VA740010
80	3"	80	97	194	143	295	VA740011
100	4"	100	108	216	173	400	VA740012

**VALVOLE A SFERA
TRE PEZZI PASSAGGIO TOTALE
SALDARE A TASCA
IN ACCIAIO
DA.MA.AN.**



DN	ø	A	B	C	D	E	CODICE
8	1/4"	11,6	26,5	53	48	98,5	VA745502
10	3/8"	12,7	26,5	53	48	98,5	VA745503
15	1/2"	15	31	62	54	98,5	VA745504
20	3/4"	20	38,5	77	59	126	VA745505
25	1"	25,4	42,5	85	75	143	VA745506
32	1" 1/4	32	50,5	101	80	143	VA745507
40	1" 1/2	38,1	56,5	113	85	188	VA745508
50	2"	50,8	65	130	95	188	VA745509
65	2" 1/2	65	77,5	155	133	295	VA745510
80	3"	80	97	194	143	295	VA745511
100	4"	100	108	216	173	400	VA745512

VALVOLE A SFERA AISI 316



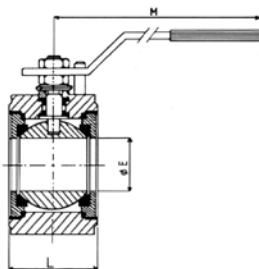
DA.MA.AN.

VALVOLE A SFERA FLANGIATE IN ACCIAIO AISI 316

VALVOLE A SFERA FLANGIATE AISI 316

VALVOLA A SFERA FLANGIATA IN ACCIAIO

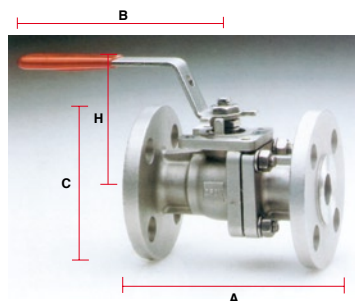
DA.MA.AN.



DN	GAS	ø E	L	M	CODICE
15	1/2"	14	32	150	VA7610015
20	3/4"	19	42	185	VA7610020
25	1"	25	45	185	VA7610025
32	1" 1/4	32	54	280	VA7610032
40	1" 1/2	38	65	280	VA7610040
50	2"	48	72	280	VA7610050
65	2" 1/2	65	98	380	VA7610065
80	3"	76	120	380	VA7610080
100	4"	95	140	480	VA7610100
125	5"	119	177	480	VA7610125
150	6"	145	210	480	VA7610150

VALVOLA A SFERA FLANGIATA IN ACCIAIO

DA.MA.AN.



DN	GAS	A	B	C	H	CODICE
15	1/2"	115	125	95	64	VA7620015
20	3/4"	120	125	105	75	VA7620020
25	1"	125	160	115	93	VA7620025
32	1" 1/4	130	160	140	100	VA7620032
40	1" 1/2	140	190	150	127	VA7620040
50	2"	150	255	165	145	VA7620050
65	2" 1/2	170	330	185	174	VA7620065
80	3"	180	330	200	188	VA7620080
100	4"	190	330	220	203	VA7620100
125	5"	325	700	250	235	VA7620125
150	6"	350	700	285	252	VA7620150
200	8"	400	1000	340	300	VA7620200

**VALVOLA DI RITEGNO A CLAPET PN16
INTERFLANGIA IN ACCIAIO**

DA.MA.AN.



DN	CODICE
50	BRO6600050
65	BRO6600065
80	BRO6600080
100	BRO6600100
125	BRO6600125
150	BRO6600150
200	BRO6600200
250	BRO6600250

**VALVOLA DI RITEGNO A MOLLA
INTERFLANGIA IN ACCIAIO**

DA.MA.AN.



DN	CODICE
15	BRW6600015
20	BRW6600020
25	BRW6600025
32	BRW6600032
40	BRW6600040
50	BRW6600050
65	BRW6600065
80	BRW6600080
100	BRW6600100
125	BRW6600125

VALVOLA DI RITEGNO A DOPPIO BATTENTE
INTERFLANGIA IN ACCIAIO

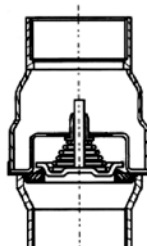
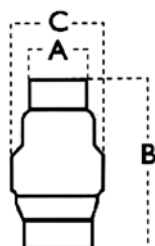
DA.MA.AN.



DN	CODICE
150	BRD6600150
200	BRD6600200
250	BRD6600250
300	BRD6600300
350	BRD6600350
400	BRD6600400
450	BRD6600450
500	BRD6600500
600	BRD6600600

VALVOLE DI RITEGNO
IN ACCIAIO

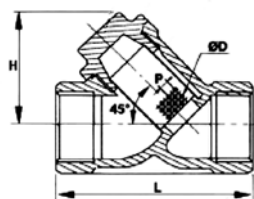
DA.MA.AN.



DN	GAS	B	C	CODICE
8	1/4"	54	32	FI1237B02
10	3/8"	54	32	FI1237B03
15	1/2"	54	32	FI1237B04
20	3/4"	72	45	FI1237B05
25	1"	88	53	FI1237B06
32	1" 1/4	99	62	FI1237B07
40	1" 1/2	117	78	FI1237B08
50	2"	119	84	FI1237B09
65	2" 1/2	130	106	FI1237B10
80	3"	137	126	FI1237B11
100	4"	167	161	FI1237B12

FILTRI A Y IN ACCIAIO PN 40

DA.MA.AN.



DN	GAS	L	M	D	P	CODICE
8	1/4"					BR10000002
10	3/8"					BR10000003
15	1/2"	65	40	1	3	BR10000004
20	3/4"	80	45	1	3	BR10000005
25	1"	90	55	1	3	BR10000006
32	1" 1/4	105	65	1	3	BR10000007
40	1" 1/2	120	70	1	3	BR10000008
50	2"	140	85	1	3	BR10000009


DN	GAS	d	s	CODICE
10	3/8"	17,2	1,60	A richiesta
		17,2	2,30	A richiesta
		17,2	3,20	A richiesta
15	1/2"	21,3	1,25	A richiesta
		21,3	1,50	A richiesta
		21,3	1,60	A richiesta
		21,3	2,00	A richiesta
		21,3	2,11	A richiesta
20	3/4"	26,9	1,25	A richiesta
		26,9	1,60	A richiesta
		26,9	1,65	A richiesta
		26,9	2,00	A richiesta
		26,9	2,65	A richiesta
		26,9	7,10	A richiesta
		26,9	8,00	A richiesta
25	1"	33,7	1,60	A richiesta
		33,7	2,00	A richiesta
		33,7	2,30	A richiesta
		33,7	2,60	A richiesta
		33,7	2,90	A richiesta
		33,7	3,20	A richiesta
32	1" 1/4	42,4	1,60	A richiesta
		42,4	1,65	A richiesta
		42,4	2,00	A richiesta
		42,4	2,60	A richiesta
		42,4	3,20	A richiesta
		42,4	3,60	A richiesta
40	1" 1/2	48,3	2,00	A richiesta
		48,3	3,25	A richiesta
		48,3	3,60	A richiesta
		48,3	4,05	A richiesta
50	2"	60,3	1,60	A richiesta
		60,3	1,65	A richiesta
		60,3	2,00	A richiesta
		60,3	2,77	A richiesta
		60,3	3,91	A richiesta
		60,3	5,54	A richiesta
		60,3	8,74	A richiesta
65	2" 1/2	76,1	2,00	A richiesta
		76,1	2,60	A richiesta
		76,1	2,90	A richiesta
		76,1	3,20	A richiesta
		76,1	3,60	A richiesta
		76,1	3,65	A richiesta
		76,1	6,30	A richiesta

TUBI INOX
DA.MA.AN.





Segue →

TUBI INOX
DA.MA.AN.




DN	GAS	d	s	CODICE		
80	3"	88,9	2,00	A richiesta		
		88,9	2,11	A richiesta		
		88,9	2,60	A richiesta		
		88,9	2,77	A richiesta		
		88,9	2,90	A richiesta		
		88,9	3,05	A richiesta		
		88,9	3,20	A richiesta		
		88,9	4,00	A richiesta		
		88,9	5,49	A richiesta		
		88,9	6,30	A richiesta		
		88,9	7,62	A richiesta		
		88,9	11,13	A richiesta		
			3" 1/2	101,6	3,05	A richiesta
				101,6	3,60	A richiesta
101,6	5,74			A richiesta		
101,6	8,08			A richiesta		
		108	3,60	A richiesta		
		108	4,00	A richiesta		
100	4"	114,3	3,05	A richiesta		
		114,3	4,50	A richiesta		
		114,3	6,02	A richiesta		
		114,3	8,56	A richiesta		
		114,3	13,49	A richiesta		
125	5"	139,7	4,00	A richiesta		
150	6"	168,28	3,40	A richiesta		
		168,28	7,11	A richiesta		
		168,28	10,97	A richiesta		
		168,28	18,26	A richiesta		


 	DN	GAS	d	s	CODICE
	10	3/8"	17,2	1,00	A richiesta
17,2			1,50	A richiesta	
17,2			1,65	A richiesta	
17,2			2,00	A richiesta	
17,2			2,31	A richiesta	
15	1/2"	21,3	1,00	A richiesta	
		21,3	1,20	A richiesta	
		21,3	1,50	A richiesta	
		21,3	1,60	A richiesta	
		21,3	2,00	A richiesta	
		21,3	2,50	A richiesta	
		21,3	2,60	A richiesta	
		21,3	3,00	A richiesta	
20	3/4"	26,9	1,00	A richiesta	
		26,9	1,25	A richiesta	
		26,9	1,50	A richiesta	
		26,9	1,60	A richiesta	
		26,9	2,00	A richiesta	
		26,9	2,50	A richiesta	
		26,9	2,60	A richiesta	
		26,9	3,00	A richiesta	
		26,9	3,20	A richiesta	
25	1"	33,7	1,20	A richiesta	
		33,7	1,50	A richiesta	
		33,7	1,60	A richiesta	
		33,7	2,00	A richiesta	
		33,7	2,50	A richiesta	
		33,7	2,60	A richiesta	
		33,7	2,90	A richiesta	
		33,7	3,00	A richiesta	
		33,7	3,20	A richiesta	
32	1" 1/4	42,4	1,20	A richiesta	
		42,4	1,50	A richiesta	
		42,4	1,60	A richiesta	
		42,4	2,00	A richiesta	
		42,4	2,50	A richiesta	
		42,4	2,60	A richiesta	
		42,4	2,90	A richiesta	
		42,4	3,00	A richiesta	
		42,4	3,20	A richiesta	
		42,4	3,60	A richiesta	

Segue →



		DN	GAS	d	s	CODICE
<p>TUBI INOX DA.MA.AN.</p> 	40	1" 1/2	48,3	1,25	A richiesta	
			48,3	1,50	A richiesta	
			48,3	1,60	A richiesta	
			48,3	2,00	A richiesta	
			48,3	2,50	A richiesta	
			48,3	2,60	A richiesta	
			48,3	2,90	A richiesta	
			48,3	3,00	A richiesta	
			48,3	3,20	A richiesta	
			48,3	3,60	A richiesta	
	50	2"	60,3	1,50	A richiesta	
			60,3	1,60	A richiesta	
			60,3	2,00	A richiesta	
			60,3	2,50	A richiesta	
			60,3	2,60	A richiesta	
			60,3	2,90	A richiesta	
			60,3	3,00	A richiesta	
			60,3	3,20	A richiesta	
			60,3	3,60	A richiesta	
			60,3	4,00	A richiesta	
	65	2" 1/2	76,1	1,50	A richiesta	
			76,1	1,60	A richiesta	
			76,1	2,00	A richiesta	
			76,1	2,30	A richiesta	
			76,1	2,50	A richiesta	
			76,1	2,60	A richiesta	
			76,1	2,90	A richiesta	
			76,1	3,00	A richiesta	
			76,1	3,20	A richiesta	
			76,1	3,60	A richiesta	
	80	3"	88,9	1,50	A richiesta	
			88,9	1,60	A richiesta	
			88,9	2,00	A richiesta	
			88,9	2,30	A richiesta	
			88,9	2,50	A richiesta	
			88,9	2,60	A richiesta	
			88,9	2,90	A richiesta	
			88,9	3,00	A richiesta	
			88,9	3,05	A richiesta	
			88,9	3,20	A richiesta	
88,9	4,00	A richiesta				
88,9	5,49	A richiesta				

Segue →

		DN	GAS	d	s	CODICE	
<p>TUBI INOX DA.MA.AN.</p> 			3" 1/2	101,6	1,50	A richiesta	
				101,6	1,60	A richiesta	
				101,6	2,00	A richiesta	
				101,6	2,11	A richiesta	
				101,6	2,50	A richiesta	
				101,6	3,00	A richiesta	
				101,6	4,00	A richiesta	
					108	1,50	A richiesta
					108	2,00	A richiesta
					108	3,00	A richiesta
					108	4,00	A richiesta
	100	4"			114,3	1,50	A richiesta
					114,3	1,60	A richiesta
					114,3	2,00	A richiesta
					114,3	2,50	A richiesta
114,3					2,60	A richiesta	
114,3					2,90	A richiesta	
114,3					3,00	A richiesta	
114,3					3,05	A richiesta	
114,3					3,20	A richiesta	
114,3					3,60	A richiesta	
114,3					4,00	A richiesta	
114,3					6,02	A richiesta	
125	5"			139,7	1,50	A richiesta	
				139,7	2,00	A richiesta	
				139,7	2,50	A richiesta	
				139,7	2,60	A richiesta	
				139,7	3,00	A richiesta	
				139,7	4,00	A richiesta	
150	6"			168,3	2,00	A richiesta	
				168,3	2,50	A richiesta	
				168,3	2,60	A richiesta	
				168,3	2,77	A richiesta	
				168,3	3,00	A richiesta	
				168,3	3,40	A richiesta	
				168,3	3,60	A richiesta	
				168,3	4,00	A richiesta	
				168,3	5,00	A richiesta	



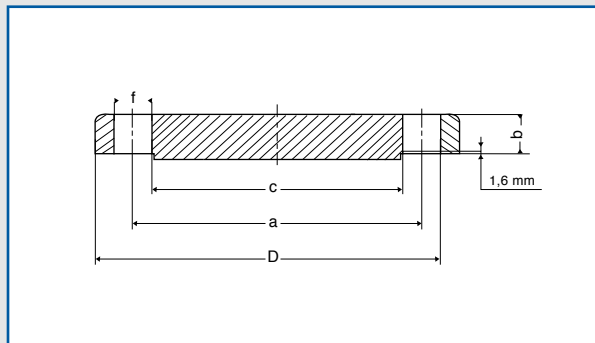
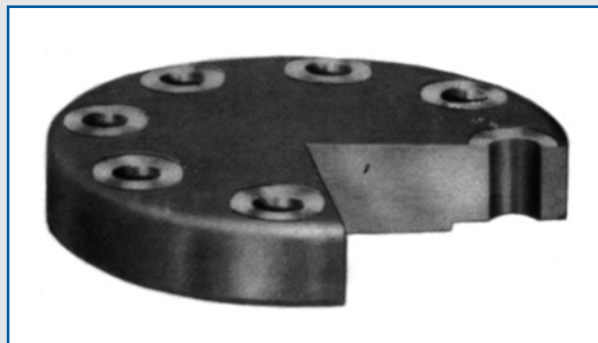
FLANGE PIANE UNI 2277/2278 PN 10/16 DA.MA.AN.	DN	GAS	NYfori	ø EST.	CODICE
		15	1/2"	4	95
	20	3/4"	4	105	FL1622780020
	25	1"	4	115	FL1622780025
	32	1" 1/4	4	140	FL1622780032
	40	1" 1/2	4	150	FL1622780040
	50	2"	4	165	FL1622780050
	65	2" 1/2	4	185	FL1622780065
	80	3"	4	200	FL1622770080
	80	3"	8	200	FL1622780080
	100	4"	8	220	FL1622780100
	125	5"	8	250	FL1622780125
	150	6"	8	285	FL1622780150
	200	8"	8	340	FL1622770200
	200	8"	12	340	FL1622780200
	250	10"	12	395	FL1622770250
	250	10"	12	405	FL1622780250
	300	12"	12	445	FL1622770300
	300	12"	12	460	FL1622780300

FLANGE COLLARINO UNI 2281/2282 PN 10/16 DA.MA.AN.	DN	GAS	NYfori	ø EST.	CODICE
		15	1/2"	4	95
	20	3/4"	4	105	FL1622820020
	25	1"	4	115	FL1622820025
	32	1" 1/4	4	140	FL1622820032
	40	1" 1/2	4	150	FL1622820040
	50	2"	4	165	FL1622820050
	65	2" 1/2	4	185	FL1622820065
	80	3"	4	200	FL1622810080
	80	3"	8	200	FL1622820080
	100	4"	8	220	FL1622820100
	125	5"	8	250	FL1622820125
	150	6"	8	285	FL1622820150
	200	8"	8	340	FL1622810200
	200	8"	12	340	FL1622820200

	DN	GAS	NYfori	ø EST.	CODICE
<p>FLANGE CIECHE</p> <p>UNI 6092/6093</p> <p>PN 10/16</p> <p>DA.MA.AN.</p> 	15	1/2"	4	95	FL1660930015
	20	3/4"	4	105	FL1660930020
	25	1"	4	115	FL1660930025
	32	1" 1/4	4	140	FL1660930032
	40	1" 1/2	4	150	FL1660930040
	50	2"	4	165	FL1660930050
	65	2" 1/2	4	185	FL1660930065
	80	3"	4	200	FL1660920080
	80	3"	8	200	FL1660930080
	100	4"	8	220	FL1660930100
	125	5"	8	250	FL1660930125
	150	6"	8	285	FL1660930150
	200	8"	8	340	FL1660920200
	200	8"	12	340	FL1660930200

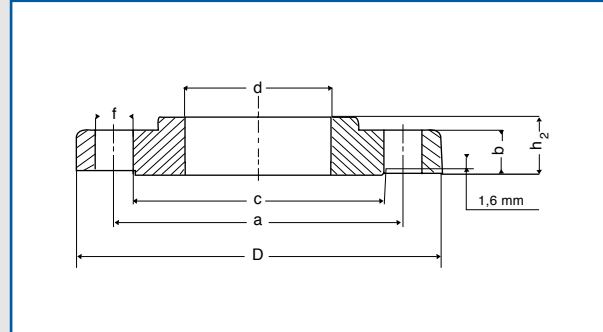
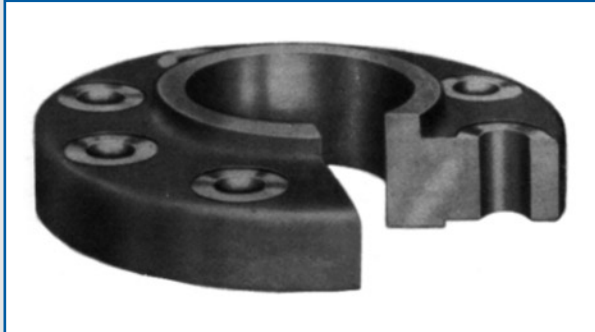
Inoltre siamo in grado di fornire flange a disegno di qualunque diametro e materiale con finiture particolari.

A richiesta si forniscono:
anelli d'appoggio - flange filettate
flange libere



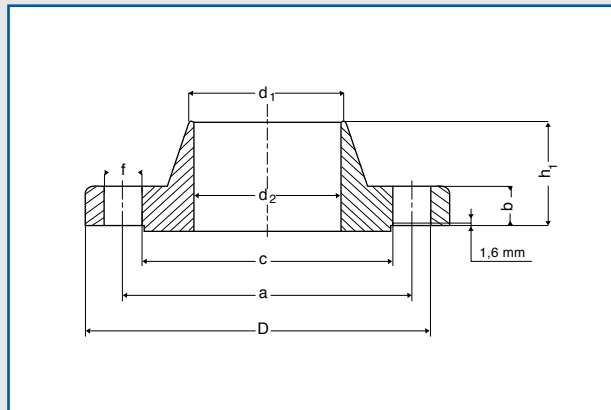
CIECA
BLIND

DN pollici	FLANGIA										FORATURA			CODICE
	D mm	d mm	d ₁ mm	d ₂ mm	b mm	c mm	g mm	h ₁ mm	h ₂ mm	h ₃ mm	N. fori	f mm	a mm	
1/2	89	22	21	16	12	35	10	48	16	16	4	16	61	FL16A150B004
3/4	98	28	27	21	13	43	11	53	16	16	4	16	70	FL16A150B005
1	108	35	34	27	15	51	13	56	18	18	4	16	80	FL16A150B006
1 1/4	118	43	42	35	16	64	14	58	21	21	4	16	89	FL16A150B007
1 1/2	127	50	48	41	18	73	16	62	23	23	4	16	99	FL16A150B008
2	152	62	60	53	19	93	18	64	26	26	4	19	121	FL16A150B009
2 1/2	178	75	73	63	23	105	19	70	29	29	4	19	140	FL16A150B010
3	191	91	89	78	24	127	21	70	31	31	4	19	153	FL16A150B011
4	229	116	114	102	24	158	24	77	34	34	8	19	191	FL16A150B012
5	254	144	141	128	24	186	24	89	37	37	8	23	216	FL16A150B013
6	279	171	168	154	26	216	27	89	40	40	8	23	242	FL16A150B014
8	343	222	219	203	29	270	32	102	45	45	8	23	299	FL16A150B015
10	406	276	273	255	31	324	33	102	50	50	12	26	362	FL16A150B016
12	483	327	324	305	32	381	40	115	56	56	12	26	432	FL16A150B017
14	533	359	356	337	35	413	41	127	58	80	12	29	477	FL16A150B018
16	597	410	406	387	37	470	45	127	64	88	16	29	540	FL16A150B019
18	635	462	457	438	40	534	49	140	69	97	16	32	578	FL16A150B020
20	699	513	508	489	43	585	54	145	73	104	20	32	635	FL16A150B021
24	813	616	610	591	48	693	64	153	83	111	20	35	750	FL16A150B022



DA SALDARE PER SOVRAPPOSIZIONE
SLIP - ON WELDING

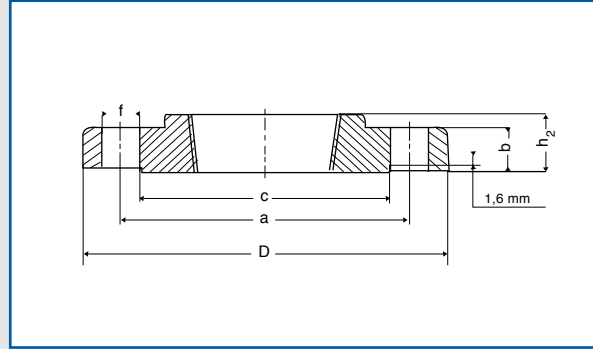
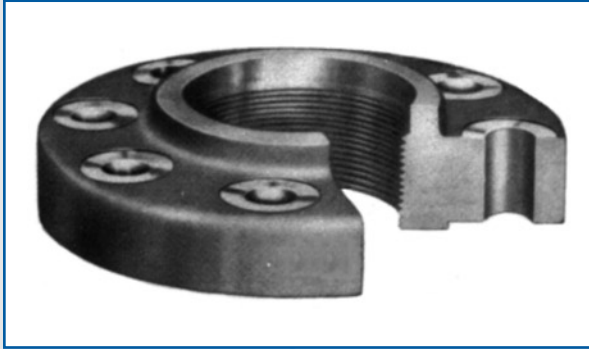
DN pollici	FLANGIA										FORATURA			CODICE
	D mm	d mm	d ₁ mm	d ₂ mm	b mm	c mm	g mm	h ₁ mm	h ₂ mm	h ₃ mm	N. fori	f mm	a mm	
1/2	89	22	21	16	12	35	10	48	16	16	4	16	61	FL16A150S004
3/4	98	28	27	21	13	43	11	53	16	16	4	16	70	FL16A150S005
1	108	35	34	27	15	51	13	56	18	18	4	16	80	FL16A150S006
1 1/4	118	43	42	35	16	64	14	58	21	21	4	16	89	FL16A150S007
1 1/2	127	50	48	41	18	73	16	62	23	23	4	16	99	FL16A150S008
2	152	62	60	53	19	93	18	64	26	26	4	19	121	FL16A150S009
2 1/2	178	75	73	63	23	105	19	70	29	29	4	19	140	FL16A150S010
3	191	91	89	78	24	127	21	70	31	31	4	19	153	FL16A150S011
4	229	116	114	102	24	158	24	77	34	34	8	19	191	FL16A150S012
5	254	144	141	128	24	186	24	89	37	37	8	23	216	FL16A150S013
6	279	171	168	154	26	216	27	89	40	40	8	23	242	FL16A150S014
8	343	222	219	203	29	270	32	102	45	45	8	23	299	FL16A150S015
10	406	276	273	255	31	324	33	102	50	50	12	26	362	FL16A150S016
12	483	327	324	305	32	381	40	115	56	56	12	26	432	FL16A150S017
14	533	359	356	337	35	413	41	127	58	80	12	29	477	FL16A150S018
16	597	410	406	387	37	470	45	127	64	88	16	29	540	FL16A150S019
18	635	462	457	438	40	534	49	140	69	97	16	32	578	FL16A150S020
20	699	513	508	489	43	585	54	145	73	104	20	32	635	FL16A150S021
24	813	616	610	591	48	693	64	153	83	111	20	35	750	FL16A150S022



DA SALDARE DI TESTA
WELDING NECK

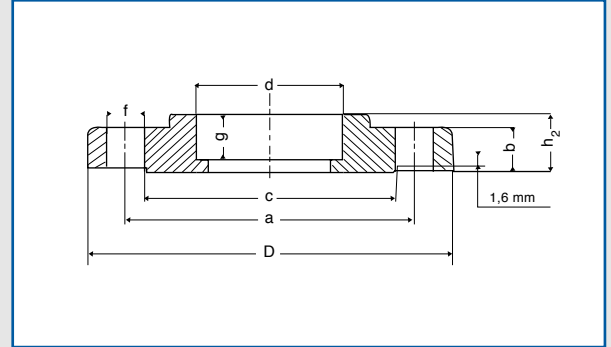
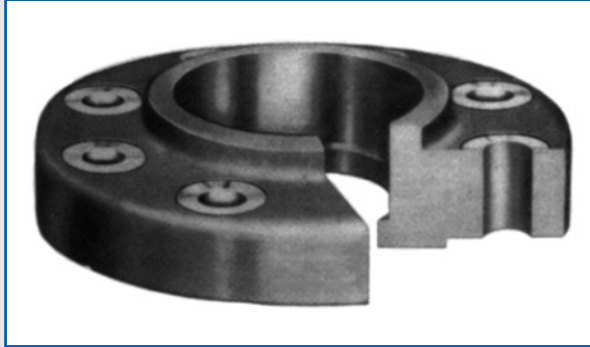
DN pollici	FLANGIA										FORATURA			CODICE
	D mm	d mm	d ₁ mm	d ₂ mm	b mm	c mm	g mm	h ₁ mm	h ₂ mm	h ₃ mm	N. fori	f mm	a mm	
1/2	89	22	21	16	12	35	10	48	16	16	4	16	61	FL16A150W004
3/4	98	28	27	21	13	43	11	53	16	16	4	16	70	FL16A150W005
1	108	35	34	27	15	51	13	56	18	18	4	16	80	FL16A150W006
1 1/4	118	43	42	35	16	64	14	58	21	21	4	16	89	FL16A150W007
1 1/2	127	50	48	41	18	73	16	62	23	23	4	16	99	FL16A150W008
2	152	62	60	53	19	93	18	64	26	26	4	19	121	FL16A150W009
2 1/2	178	75	73	63	23	105	19	70	29	29	4	19	140	FL16A150W010
3	191	91	89	78	24	127	21	70	31	31	4	19	153	FL16A150W011
4	229	116	114	102	24	158	24	77	34	34	8	19	191	FL16A150W012
5	254	144	141	128	24	186	24	89	37	37	8	23	216	FL16A150W013
6	279	171	168	154	26	216	27	89	40	40	8	23	242	FL16A150W014
8	343	222	219	203	29	270	32	102	45	45	8	23	299	FL16A150W015
10	406	276	273	255	31	324	33	102	50	50	12	26	362	FL16A150W016
12	483	327	324	305	32	381	40	115	56	56	12	26	432	FL16A150W017
14	533	359	356	337	35	413	41	127	58	80	12	29	477	FL16A150W018
16	597	410	406	387	37	470	45	127	64	88	16	29	540	FL16A150W019
18	635	462	457	438	40	534	49	140	69	97	16	32	578	FL16A150W020
20	699	513	508	489	43	585	54	145	73	104	20	32	635	FL16A150W021

FLANGE - ANSI (ASA) SERIE 150 AISI 316 L



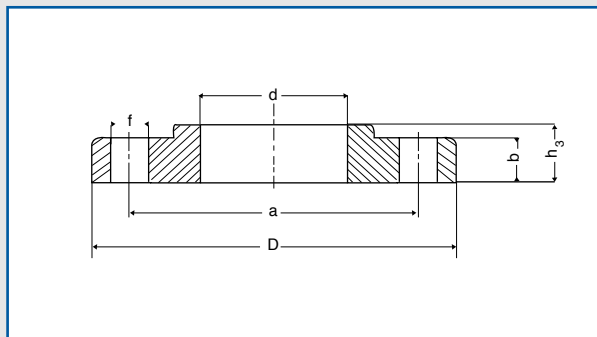
**FILETTATA
SCREWED**

DN pollici	FLANGIA										FORATURA			CODICE
	D mm	d mm	d ₁ mm	d ₂ mm	b mm	c mm	g mm	h ₁ mm	h ₂ mm	h ₃ mm	N. fori	f mm	a mm	
1/2	89	22	21	16	12	35	10	48	16	16	4	16	61	A RICHIESTA
3/4	98	28	27	21	13	43	11	53	16	16	4	16	70	A RICHIESTA
1	108	35	34	27	15	51	13	56	18	18	4	16	80	A RICHIESTA
1 1/4	118	43	42	35	16	64	14	58	21	21	4	16	89	A RICHIESTA
1 1/2	127	50	48	41	18	73	16	62	23	23	4	16	99	A RICHIESTA
2	152	62	60	53	19	93	18	64	26	26	4	19	121	A RICHIESTA
2 1/2	178	75	73	63	23	105	19	70	29	29	4	19	140	A RICHIESTA
3	191	91	89	78	24	127	21	70	31	31	4	19	153	A RICHIESTA
4	229	116	114	102	24	158	24	77	34	34	8	19	191	A RICHIESTA
5	254	144	141	128	24	186	24	89	37	37	8	23	216	A RICHIESTA
6	279	171	168	154	26	216	27	89	40	40	8	23	242	A RICHIESTA
8	343	222	219	203	29	270	32	102	45	45	8	23	299	A RICHIESTA
10	406	276	273	255	31	324	33	102	50	50	12	26	362	A RICHIESTA
12	483	327	324	305	32	381	40	115	56	56	12	26	432	A RICHIESTA
14	533	359	356	337	35	413	41	127	58	80	12	29	477	A RICHIESTA
16	597	410	406	387	37	470	45	127	64	88	16	29	540	A RICHIESTA
18	635	462	457	438	40	534	49	140	69	97	16	32	578	A RICHIESTA
20	699	513	508	489	43	585	54	145	73	104	20	32	635	A RICHIESTA
24	813	616	610	591	48	693	64	153	83	111	20	35	750	A RICHIESTA



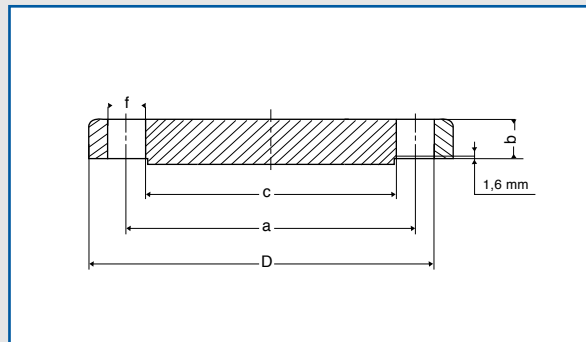
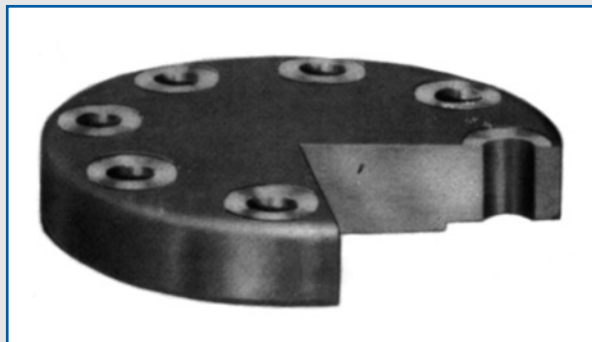
CON TASCA DA SALDARE
SOCKET - WELDING

DN pollici	FLANGIA										FORATURA			CODICE
	D mm	d mm	d ₁ mm	d ₂ mm	b mm	c mm	g mm	h ₁ mm	h ₂ mm	h ₃ mm	N. fori	f mm	a mm	
1/2	89	22	21	16	12	35	10	48	16	16	4	16	61	A RICHIEFS
3/4	98	28	27	21	13	43	11	53	16	16	4	16	70	A RICHIEFS
1	108	35	34	27	15	51	13	56	18	18	4	16	80	A RICHIEFS
1 1/4	118	43	42	35	16	64	14	58	21	21	4	16	89	A RICHIEFS
1 1/2	127	50	48	41	18	73	16	62	23	23	4	16	99	A RICHIEFS
2	152	62	60	53	19	93	18	64	26	26	4	19	121	A RICHIEFS
2 1/2	178	75	73	63	23	105	19	70	29	29	4	19	140	A RICHIEFS
3	191	91	89	78	24	127	21	70	31	31	4	19	153	A RICHIEFS
4	229	116	114	102	24	158	24	77	34	34	8	19	191	A RICHIEFS
5	254	144	141	128	24	186	24	89	37	37	8	23	216	A RICHIEFS
6	279	171	168	154	26	216	27	89	40	40	8	23	242	A RICHIEFS
8	343	222	219	203	29	270	32	102	45	45	8	23	299	A RICHIEFS
10	406	276	273	255	31	324	33	102	50	50	12	26	362	A RICHIEFS
12	483	327	324	305	32	381	40	115	56	56	12	26	432	A RICHIEFS
14	533	359	356	337	35	413	41	127	58	80	12	29	477	A RICHIEFS
16	597	410	406	387	37	470	45	127	64	88	16	29	540	A RICHIEFS
18	635	462	457	438	40	534	49	140	69	97	16	32	578	A RICHIEFS
20	699	513	508	489	43	585	54	145	73	104	20	32	635	A RICHIEFS
24	813	616	610	591	48	693	64	153	83	111	20	35	750	A RICHIEFS



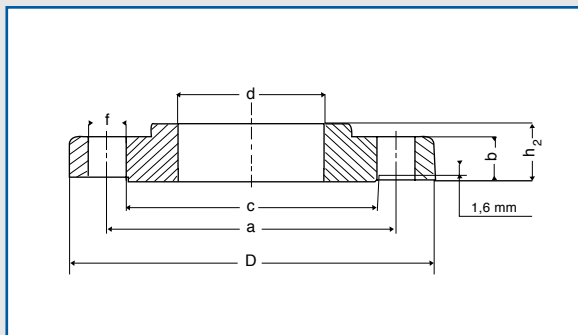
SCORREVOLE A COLLARE
LAPPED

DN pollici	FLANGIA										FORATURA			CODICE
	D mm	d mm	d ₁ mm	d ₂ mm	b mm	c mm	g mm	h ₁ mm	h ₂ mm	h ₃ mm	N. fori	f mm	a mm	
1/2	89	22	21	16	12	35	10	48	16	16	4	16	61	A RICHIESS
3/4	98	28	27	21	13	43	11	53	16	16	4	16	70	A RICHIESS
1	108	35	34	27	15	51	13	56	18	18	4	16	80	A RICHIESS
1 1/4	118	43	42	35	16	64	14	58	21	21	4	16	89	A RICHIESS
1 1/2	127	50	48	41	18	73	16	62	23	23	4	16	99	A RICHIESS
2	152	62	60	53	19	93	18	64	26	26	4	19	121	A RICHIESS
2 1/2	178	75	73	63	23	105	19	70	29	29	4	19	140	A RICHIESS
3	191	91	89	78	24	127	21	70	31	31	4	19	153	A RICHIESS
4	229	116	114	102	24	158	24	77	34	34	8	19	191	A RICHIESS
5	254	144	141	128	24	186	24	89	37	37	8	23	216	A RICHIESS
6	279	171	168	154	26	216	27	89	40	40	8	23	242	A RICHIESS
8	343	222	219	203	29	270	32	102	45	45	8	23	299	A RICHIESS
10	406	276	273	255	31	324	33	102	50	50	12	26	362	A RICHIESS
12	483	327	324	305	32	381	40	115	56	56	12	26	432	A RICHIESS
14	533	359	356	337	35	413	41	127	58	80	12	29	477	A RICHIESS
16	597	410	406	387	37	470	45	127	64	88	16	29	540	A RICHIESS
18	635	462	457	438	40	534	49	140	69	97	16	32	578	A RICHIESS
20	699	513	508	489	43	585	54	145	73	104	20	32	635	A RICHIESS
24	813	616	610	591	48	693	64	153	83	111	20	35	750	A RICHIESS



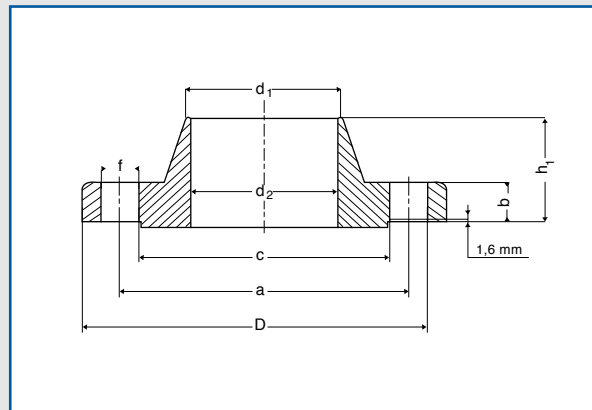
**CIECA
BLIND**

DN pollici	FLANGIA										FORATURA			CODICE
	D mm	d mm	d ₁ mm	d ₂ mm	b mm	c mm	g mm	h ₁ mm	h ₂ mm	h ₃ mm	N. fori	f mm	a mm	
1/2	95	22	21	16	15	35	10	53	23	23	4	16	67	FL16A300B004
3/4	118	28	27	21	16	43	11	58	26	26	4	19	83	FL16A300B005
1	124	35	34	27	18	51	13	62	27	27	4	19	89	FL16A300B006
1 1/4	133	43	42	35	19	64	14	66	27	27	4	19	99	FL16A300B007
1 1/2	156	50	48	41	21	73	16	69	31	31	4	23	115	FL16A300B008
2	165	62	60	53	23	93	18	70	34	34	8	19	127	FL16A300B009
2 1/2	191	75	73	63	26	105	19	77	39	39	8	23	150	FL16A300B010
3	210	91	89	78	29	127	21	80	43	43	8	23	169	FL16A300B011
4	254	116	114	102	32	158	24	86	48	48	8	23	200	FL16A300B012
5	279	144	141	128	35	186	—	99	51	51	8	23	235	FL16A300B013
6	318	171	168	154	37	216	—	99	53	53	12	23	270	FL16A300B014
8	381	222	219	203	42	270	—	111	62	62	12	26	331	FL16A300B015
10	445	276	273	255	48	324	—	118	67	96	16	29	388	FL16A300B016
12	521	327	324	305	51	381	—	130	73	102	16	32	451	FL16A300B017
14	584	359	356	337	54	413	—	143	77	111	20	32	515	FL16A300B018
16	648	410	406	387	58	470	—	146	83	121	20	35	572	FL16A300B019
18	711	462	457	438	61	534	—	159	89	130	24	35	629	FL16A300B020
20	775	513	508	489	64	585	—	162	96	140	24	35	686	FL16A300B021
24	914	616	610	591	70	693	—	168	107	152	24	42	813	FL16A300B022



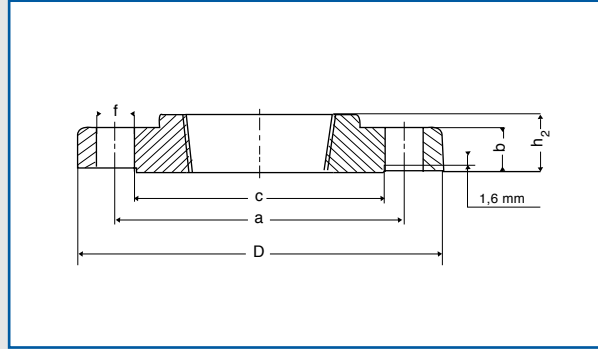
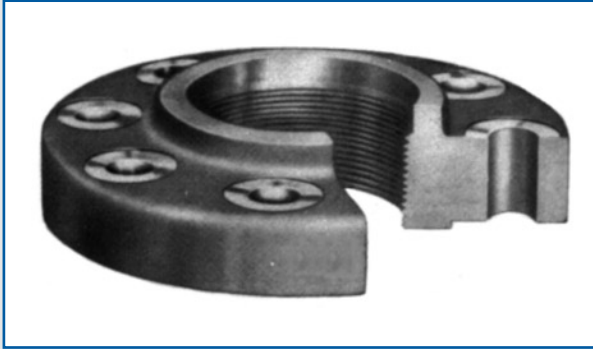
DA SALDARE PER SOVRAPPOSIZIONE
SLIP - ON WELDING

DN pollici	FLANGIA										FORATURA			CODICE
	D mm	d mm	d ₁ mm	d ₂ mm	b mm	c mm	g mm	h ₁ mm	h ₂ mm	h ₃ mm	N. fori	f mm	a mm	
1/2	95	22	21	16	15	35	10	53	23	23	4	16	67	FL16A300S004
3/4	118	28	27	21	16	43	11	58	26	26	4	19	83	FL16A300S005
1	124	35	34	27	18	51	13	62	27	27	4	19	89	FL16A300S006
1 1/4	133	43	42	35	19	64	14	66	27	27	4	19	99	FL16A300S007
1 1/2	156	50	48	41	21	73	16	69	31	31	4	23	115	FL16A300S008
2	165	62	60	53	23	93	18	70	34	34	8	19	127	FL16A300S009
2 1/2	191	75	73	63	26	105	19	77	39	39	8	23	150	FL16A300S010
3	210	91	89	78	29	127	21	80	43	43	8	23	169	FL16A300S011
4	254	116	114	102	32	158	24	86	48	48	8	23	200	FL16A300S012
5	279	144	141	128	35	186	—	99	51	51	8	23	235	FL16A300S013
6	318	171	168	154	37	216	—	99	53	53	12	23	270	FL16A300S014
8	381	222	219	203	42	270	—	111	62	62	12	26	331	FL16A300S015
10	445	276	273	255	48	324	—	118	67	96	16	29	388	FL16A300S016
12	521	327	324	305	51	381	—	130	73	102	16	32	451	FL16A300S017
14	584	359	356	337	54	413	—	143	77	111	20	32	515	FL16A300S018
16	648	410	406	387	58	470	—	146	83	121	20	35	572	FL16A300S019
18	711	462	457	438	61	534	—	159	89	130	24	35	629	FL16A300S020
20	775	513	508	489	64	585	—	162	96	140	24	35	686	FL16A300S021
24	914	616	610	591	70	693	—	168	107	152	24	42	813	FL16A300S022



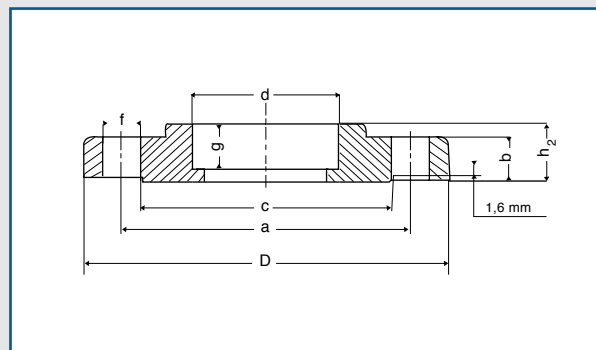
DA SALDARE DI TESTA
WELDING NECK

DN pollici	FLANGIA										FORATURA			CODICE
	D mm	d mm	d ₁ mm	d ₂ mm	b mm	c mm	g mm	h ₁ mm	h ₂ mm	h ₃ mm	N. fori	f mm	a mm	
1/2	95	22	21	16	15	35	10	53	23	23	4	16	67	FL16A300W004
3/4	118	28	27	21	16	43	11	58	26	26	4	19	83	FL16A300W005
1	124	35	34	27	18	51	13	62	27	27	4	19	89	FL16A300W006
1 1/4	133	43	42	35	19	64	14	66	27	27	4	19	99	FL16A300W007
1 1/2	156	50	48	41	21	73	16	69	31	31	4	23	115	FL16A300W008
2	165	62	60	53	23	93	18	70	34	34	8	19	127	FL16A300W009
2 1/2	191	75	73	63	26	105	19	77	39	39	8	23	150	FL16A300W010
3	210	91	89	78	29	127	21	80	43	43	8	23	169	FL16A300W011
4	254	116	114	102	32	158	24	86	48	48	8	23	200	FL16A300W012
5	279	144	141	128	35	186	—	99	51	51	8	23	235	FL16A300W013
6	318	171	168	154	37	216	—	99	53	53	12	23	270	FL16A300W014
8	381	222	219	203	42	270	—	111	62	62	12	26	331	FL16A300W015
10	445	276	273	255	48	324	—	118	67	96	16	29	388	FL16A300W016
12	521	327	324	305	51	381	—	130	73	102	16	32	451	FL16A300W017
14	584	359	356	337	54	413	—	143	77	111	20	32	515	FL16A300W018
16	648	410	406	387	58	470	—	146	83	121	20	35	572	FL16A300W019
18	711	462	457	438	61	534	—	159	89	130	24	35	629	FL16A300W020
20	775	513	508	489	64	585	—	162	96	140	24	35	686	FL16A300W021
24	914	616	610	591	70	693	—	168	107	152	24	42	813	FL16A300W022



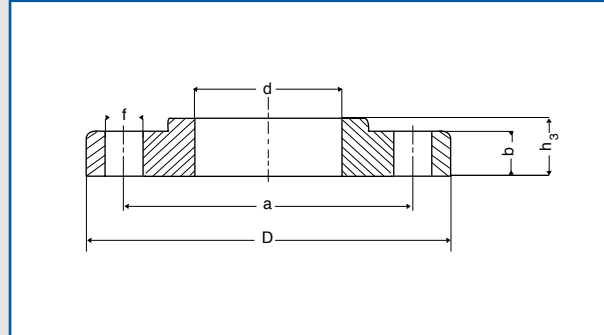
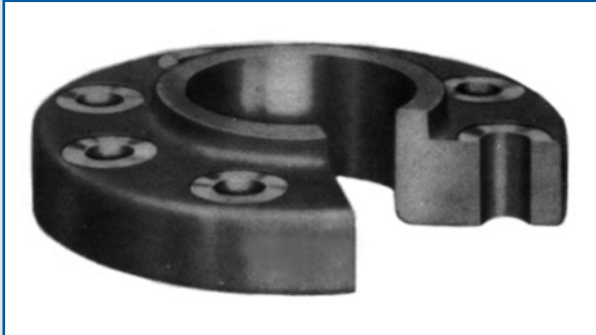
FILETTATA
SCREWED

DN pollici	FLANGIA										FORATURA			CODICE
	D mm	d mm	d ₁ mm	d ₂ mm	b mm	c mm	g mm	h ₁ mm	h ₂ mm	h ₃ mm	N. fori	f mm	a mm	
1/2	95	22	21	16	15	35	10	53	23	23	4	16	67	A RICHIES
3/4	118	28	27	21	16	43	11	58	26	26	4	19	83	A RICHIES
1	124	35	34	27	18	51	13	62	27	27	4	19	89	A RICHIES
1 1/4	133	43	42	35	19	64	14	66	27	27	4	19	99	A RICHIES
1 1/2	156	50	48	41	21	73	16	69	31	31	4	23	115	A RICHIES
2	165	62	60	53	23	93	18	70	34	34	8	19	127	A RICHIES
2 1/2	191	75	73	63	26	105	19	77	39	39	8	23	150	A RICHIES
3	210	91	89	78	29	127	21	80	43	43	8	23	169	A RICHIES
4	154	116	114	102	32	158	24	86	48	48	8	23	200	A RICHIES
5	279	144	141	128	35	186	—	99	51	51	8	23	235	A RICHIES
6	318	171	168	154	37	216	—	99	53	53	12	23	270	A RICHIES
8	381	222	219	203	42	270	—	111	62	62	12	26	331	A RICHIES
10	445	276	273	255	48	324	—	118	67	96	16	29	388	A RICHIES
12	521	327	324	305	51	381	—	130	73	102	16	32	451	A RICHIES
14	584	359	356	337	54	413	—	143	77	111	20	32	515	A RICHIES
16	648	410	406	387	58	470	—	146	83	121	20	35	572	A RICHIES
18	711	462	457	438	61	534	—	159	89	130	24	35	629	A RICHIES
20	775	513	508	489	64	585	—	162	96	140	24	35	686	A RICHIES
24	914	616	610	591	70	693	—	168	107	152	24	42	813	A RICHIES



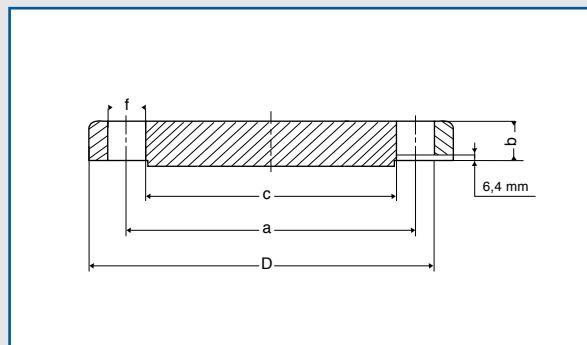
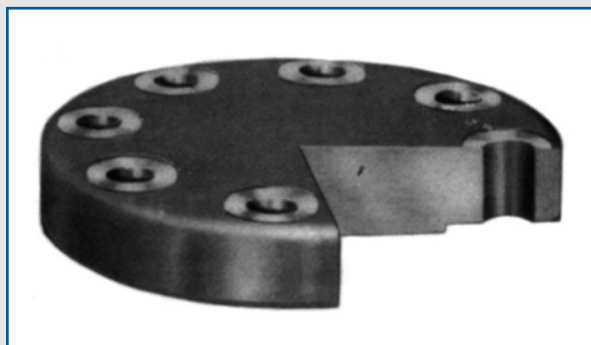
CON TASCA DA SALDARE
SOCKET - WELDING

DN pollici	FLANGIA										FORATURA			CODICE
	D mm	d mm	d ₁ mm	d ₂ mm	b mm	c mm	g mm	h ₁ mm	h ₂ mm	h ₃ mm	N. fori	f mm	a mm	
1/2	95	22	21	16	15	35	10	53	23	23	4	16	67	A RICHTER
3/4	118	28	27	21	16	43	11	58	26	26	4	19	83	A RICHTER
1	124	35	34	27	18	51	13	62	27	27	4	19	89	A RICHTER
1 1/4	133	43	42	35	19	64	14	66	27	27	4	19	99	A RICHTER
1 1/2	156	50	48	41	21	73	16	69	31	31	4	23	115	A RICHTER
2	165	62	60	53	23	93	18	70	34	34	8	19	127	A RICHTER
2 1/2	191	75	73	63	26	105	19	77	39	39	8	23	150	A RICHTER
3	210	91	89	78	29	127	21	80	43	43	8	23	169	A RICHTER
4	254	116	114	102	32	158	24	86	48	48	8	23	200	A RICHTER
5	279	144	141	128	35	186	—	99	51	51	8	23	235	A RICHTER
6	318	171	168	154	37	216	—	99	53	53	12	23	270	A RICHTER
8	381	222	219	203	42	270	—	111	62	62	12	26	331	A RICHTER
10	445	276	273	255	48	324	—	118	67	96	16	29	388	A RICHTER
12	521	327	324	305	51	381	—	130	73	102	16	32	451	A RICHTER
14	584	359	356	337	54	413	—	143	77	111	20	32	515	A RICHTER
16	648	410	406	387	58	470	—	146	83	121	20	35	572	A RICHTER
18	711	462	457	438	61	534	—	159	89	130	24	35	629	A RICHTER
20	775	513	508	489	64	585	—	162	96	140	24	35	686	A RICHTER
24	914	616	610	591	70	693	—	168	107	152	24	42	813	A RICHTER



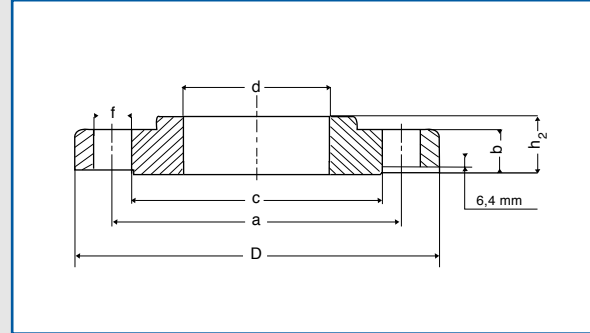
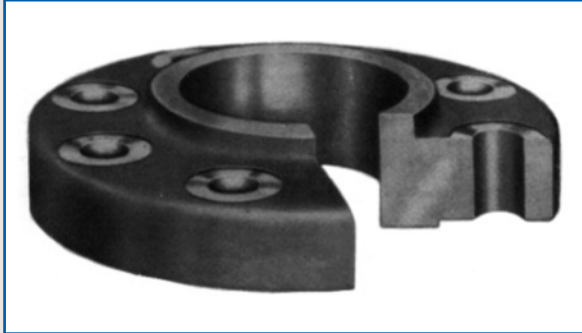
SCORREVOLE A COLLARE
LAPPED

DN pollici	FLANGIA										FORATURA			CODICE
	D mm	d mm	d ₁ mm	d ₂ mm	b mm	c mm	g mm	h ₁ mm	h ₂ mm	h ₃ mm	N. fori	f mm	a mm	
1/2	95	22	21	16	15	35	10	53	23	23	4	16	67	A RICHIEFS
3/4	118	28	27	21	16	43	11	58	26	26	4	19	83	A RICHIEFS
1	124	35	34	27	18	51	13	62	27	27	4	19	89	A RICHIEFS
1 1/4	133	43	42	35	19	64	14	66	27	27	4	19	99	A RICHIEFS
1 1/2	156	50	48	41	21	73	16	69	31	31	4	23	115	A RICHIEFS
2	165	62	60	53	23	93	18	70	34	34	8	19	127	A RICHIEFS
2 1/2	191	75	73	63	26	105	19	77	39	39	8	23	150	A RICHIEFS
3	210	91	89	78	29	127	21	80	43	43	8	23	169	A RICHIEFS
4	254	116	114	102	32	158	24	86	48	48	8	23	200	A RICHIEFS
5	279	144	141	128	35	186	—	99	51	51	8	23	235	A RICHIEFS
6	318	171	168	154	37	216	—	99	53	53	12	23	270	A RICHIEFS
8	381	222	219	203	42	270	—	111	62	62	12	26	331	A RICHIEFS
10	445	276	273	255	48	324	—	118	67	96	16	29	388	A RICHIEFS
12	521	327	324	305	51	381	—	130	73	102	16	32	451	A RICHIEFS
14	584	359	356	337	54	413	—	143	77	111	20	32	515	A RICHIEFS
16	648	410	406	387	58	470	—	146	83	121	20	35	572	A RICHIEFS
18	711	462	457	438	61	534	—	159	89	130	24	35	629	A RICHIEFS
20	775	513	508	489	64	585	—	162	96	140	24	35	686	A RICHIEFS
24	914	616	610	591	70	693	—	168	107	152	24	42	813	A RICHIEFS



CIECA
BLIND

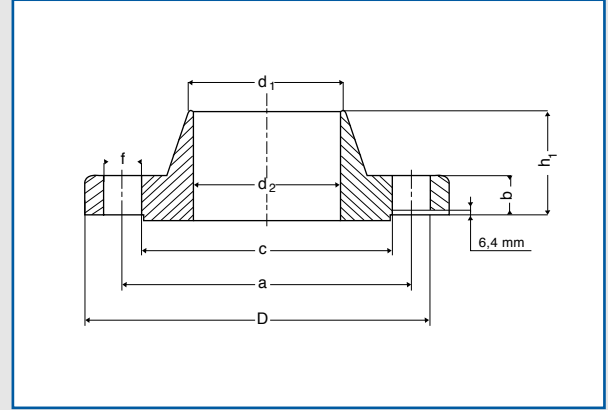
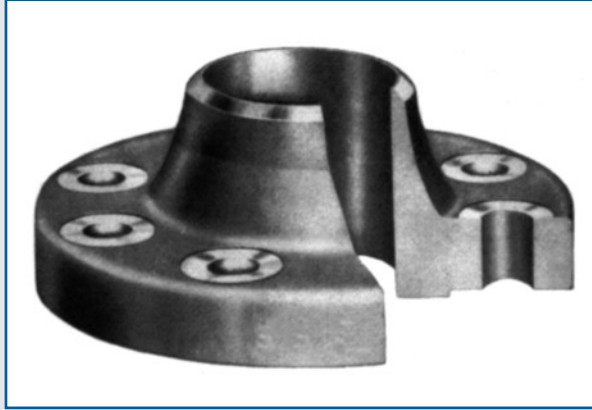
DN pollici	FLANGIA										FORATURA			CODICE
	D mm	d mm	d ₁ mm	d ₂ mm	b mm	c mm	g mm	h ₁ mm	h ₂ mm	h ₃ mm	N. fori	f mm	a mm	
1/2	95	22	21	14	15	35	10	53	23	23	4	16	67	FL16A600B004
3/4	118	28	27	19	16	43	11	58	26	26	4	19	83	FL16A600B005
1	124	35	34	24	18	51	13	62	27	27	4	19	89	FL16A600B006
1 1/4	133	43	42	33	19	64	14	67	29	29	4	19	99	FL16A600B007
1 1/2	156	50	48	38	21	73	16	70	32	32	4	23	115	FL16A600B008
2	165	62	60	49	23	93	18	73	37	37	8	19	127	FL16A600B009
2 1/2	191	75	73	59	26	105	19	80	42	42	8	23	150	FL16A600B010
3	210	91	89	74	29	127	21	83	46	46	8	23	169	FL16A600B011
4	273	116	114	97	32	158	—	102	54	54	8	26	216	FL16A600B012
5	330	144	141	122	35	186	—	115	61	61	8	29	267	FL16A600B013
6	356	171	168	146	37	216	—	118	67	67	12	29	293	FL16A600B014
8	419	222	219	194	42	270	—	134	77	77	12	32	350	FL16A600B015
10	508	276	273	248	48	324	—	153	86	111	16	35	432	FL16A600B016
12	559	327	324	298	51	381	—	156	93	118	20	35	489	FL16A600B017
14	603	359	356	Deve essere precisato dal cliente	54	413	—	165	94	127	20	38	527	FL16A600B018
16	686	410	406		58	470	—	178	107	140	20	42	604	FL16A600B019
18	743	462	457		61	534	—	184	118	153	20	45	654	FL16A600B020
20	813	513	508		64	585	—	191	127	165	24	45	724	FL16A600B021
24	940	616	610		70	693	—	204	140	184	24	51	839	FL16A600B022



DA SALDARE PER SOVRAPPOSIZIONE
SLIP - ON WELDING

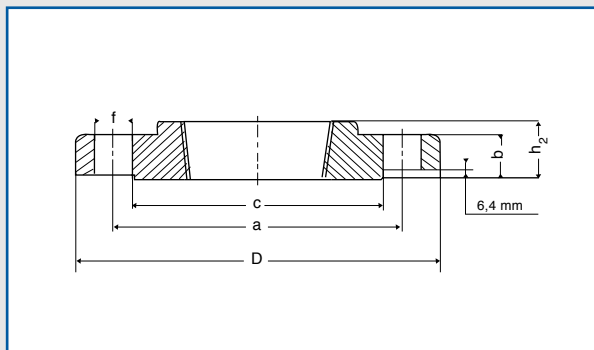
DN pollici	FLANGIA										FORATURA			CODICE
	D mm	d mm	d ₁ mm	d ₂ mm	b mm	c mm	g mm	h ₁ mm	h ₂ mm	h ₃ mm	N. fori	f mm	a mm	
1/2	95	22	21	14	15	35	10	53	23	23	4	16	67	FL16A600S004
3/4	118	28	27	19	16	43	11	58	26	26	4	19	83	FL16A600S005
1	124	35	34	24	18	51	13	62	27	27	4	19	89	FL16A600S006
1 1/4	133	43	42	33	21	64	14	67	29	29	4	19	99	FL16A600S007
1 1/2	156	50	48	38	23	73	16	70	32	32	4	23	115	FL16A600S008
2	165	62	60	49	26	93	18	73	37	37	8	19	127	FL16A600S009
2 1/2	191	75	73	59	29	105	19	80	42	42	8	23	150	FL16A600S010
3	210	91	89	74	32	127	21	83	46	46	8	23	169	FL16A600S011
4	273	116	114	97	39	158	—	102	54	54	8	26	216	FL16A600S012
5	330	144	141	122	45	186	—	115	61	61	8	29	267	FL16A600S013
6	356	171	168	146	48	216	—	118	67	67	12	29	293	FL16A600S014
8	419	222	219	194	56	270	—	134	77	77	12	32	350	FL16A600S015
10	508	276	273	248	64	324	—	153	86	111	16	35	432	FL16A600S016
12	559	327	324	298	67	381	—	156	93	118	20	35	489	FL16A600S017
14	603	359	356		70	413	—	165	94	127	20	38	527	FL16A600S018
16	686	410	406		77	470	—	178	107	140	20	42	604	FL16A600S019
18	743	462	457		83	534	—	184	118	153	20	45	654	FL16A600S020
20	813	513	508		89	585	—	191	127	165	24	45	724	FL16A600S021
24	940	616	610		102	693	—	204	140	184	24	51	839	FL16A600S022

Deve essere
precisato
dal cliente



**DA SALDARE DI TESTA
WELDING NECK**

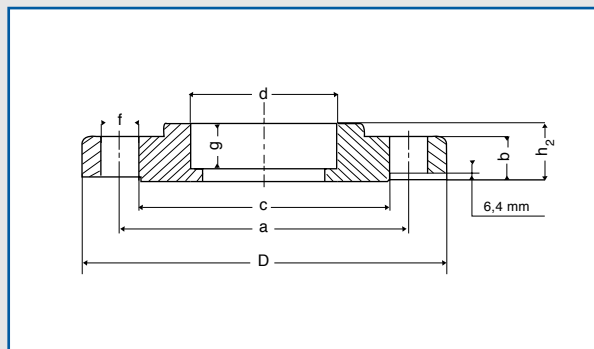
DN pollici	FLANGIA										FORATURA			CODICE
	D mm	d mm	d ₁ mm	d ₂ mm	b mm	c mm	g mm	h ₁ mm	h ₂ mm	h ₃ mm	N. fori	f mm	a mm	
1/2	95	22	21	14	15	35	10	53	23	23	4	16	67	FL16A600W004
3/4	118	28	27	19	16	43	11	58	26	26	4	19	83	FL16A600W005
1	124	35	34	24	18	51	13	62	27	27	4	19	89	FL16A600W006
1 1/4	133	43	42	33	21	64	14	67	29	29	4	19	99	FL16A600W007
1 1/2	156	50	48	38	23	73	16	70	32	32	4	23	115	FL16A600W008
2	165	62	60	49	26	93	18	73	37	37	8	19	127	FL16A600W009
2 1/2	191	75	73	59	29	105	19	80	42	42	8	23	150	FL16A600W010
3	210	91	89	74	32	127	21	83	46	46	8	23	169	FL16A600W011
4	273	116	114	97	39	158	—	102	54	54	8	26	216	FL16A600W012
5	330	144	141	122	45	186	—	115	61	61	8	29	267	FL16A600W013
6	356	171	168	146	48	216	—	118	67	67	12	29	293	FL16A600W014
8	419	222	219	194	56	270	—	134	77	77	12	32	350	FL16A600W015
10	508	276	273	248	64	324	—	153	86	111	16	35	432	FL16A600W016
12	559	327	324	298	67	381	—	156	93	118	20	35	489	FL16A600W017
14	603	359	356		70	413	—	165	94	127	20	38	527	FL16A600W018
16	686	410	406	Deve essere preciso dal cliente	77	470	—	178	107	140	20	42	604	FL16A600W019
18	743	462	457		83	534	—	184	118	153	20	45	654	FL16A600W020
20	813	513	508		89	585	—	191	127	165	24	45	724	FL16A600W021
24	940	616	610		102	693	—	204	140	184	24	51	839	FL16A600W022



FILETTATA
SCREWED

DN pollici	FLANGIA										FORATURA			CODICE
	D mm	d mm	d ₁ mm	d ₂ mm	b mm	c mm	g mm	h ₁ mm	h ₂ mm	h ₃ mm	N. fori	f mm	a mm	
1/2	95	22	21	14	15	35	10	53	23	23	4	16	67	A RICHIEFS
3/4	118	28	27	19	16	43	11	58	26	26	4	19	83	A RICHIEFS
1	124	35	34	24	18	51	13	62	27	27	4	19	89	A RICHIEFS
1 1/4	133	43	42	33	21	64	14	67	29	29	4	19	99	A RICHIEFS
1 1/2	156	50	48	38	23	73	16	70	32	32	4	23	115	A RICHIEFS
2	165	62	60	49	26	93	18	73	37	37	8	19	127	A RICHIEFS
2 1/2	191	75	73	59	29	105	19	80	42	42	8	23	150	A RICHIEFS
3	210	91	89	74	32	127	21	83	46	46	8	23	169	A RICHIEFS
4	273	116	114	97	39	158	—	102	54	54	8	26	216	A RICHIEFS
5	330	144	141	122	45	186	—	115	61	61	8	29	267	A RICHIEFS
6	356	171	168	146	48	216	—	118	67	67	12	29	293	A RICHIEFS
8	419	222	219	194	56	270	—	134	77	77	12	32	350	A RICHIEFS
10	508	276	273	248	64	324	—	153	86	111	16	35	432	A RICHIEFS
12	559	327	324	298	67	381	—	156	93	118	20	35	489	A RICHIEFS
14	603	359	356		70	413	—	165	94	127	20	38	527	A RICHIEFS
16	686	410	406		77	470	—	178	107	140	20	42	604	A RICHIEFS
18	743	462	457		83	534	—	184	118	153	20	45	654	A RICHIEFS
20	813	513	508		89	585	—	191	127	165	24	45	724	A RICHIEFS
24	940	616	610		102	693	—	204	140	184	24	51	839	A RICHIEFS

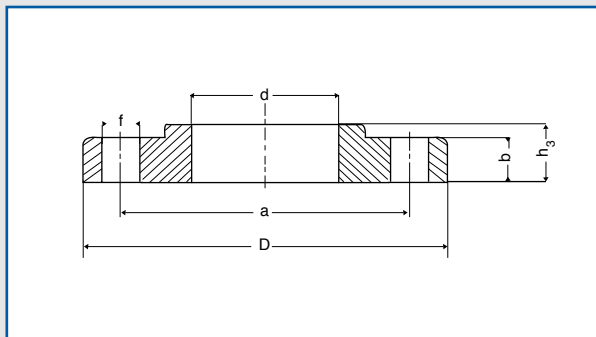
Deve essere
precisato
dal cliente



CON TASCA DA SALDARE
SOCKET - WELDING

DN pollici	FLANGIA										FORATURA			CODICE
	D mm	d mm	d ₁ mm	d ₂ mm	b mm	c mm	g mm	h ₁ mm	h ₂ mm	h ₃ mm	N. fori	f mm	a mm	
1/2	95	22	21	14	15	35	10	53	23	23	4	16	67	A RICHTER
3/4	118	28	27	19	16	43	11	58	26	26	4	19	83	A RICHTER
1	124	35	34	24	18	51	13	62	27	27	4	19	89	A RICHTER
1 1/4	133	43	42	33	21	64	14	67	29	29	4	19	99	A RICHTER
1 1/2	156	50	48	38	23	73	16	70	32	32	4	23	115	A RICHTER
2	165	62	60	49	26	93	18	73	37	37	8	19	127	A RICHTER
2 1/2	191	75	73	59	29	105	19	80	42	42	8	23	150	A RICHTER
3	210	91	89	74	32	127	21	83	46	46	8	23	169	A RICHTER
4	273	116	114	97	39	158	—	102	54	54	8	26	216	A RICHTER
5	330	144	141	122	45	186	—	115	61	61	8	29	267	A RICHTER
6	356	171	168	146	48	216	—	118	67	67	12	29	293	A RICHTER
8	419	222	219	194	56	270	—	134	77	77	12	32	350	A RICHTER
10	508	276	273	248	64	324	—	153	86	111	16	35	432	A RICHTER
12	559	327	324	298	67	381	—	156	93	118	20	35	489	A RICHTER
14	603	359	356		70	413	—	165	94	127	20	38	527	A RICHTER
16	686	410	406		77	470	—	178	107	140	20	42	604	A RICHTER
18	743	462	457		83	534	—	184	118	153	20	45	654	A RICHTER
20	813	513	508		89	585	—	191	127	165	24	45	724	A RICHTER
24	940	616	610		102	693	—	204	140	184	24	51	839	A RICHTER

Deve essere
precisato
dal cliente



SCORREVOLE A COLLARE
LAPPED

DN pollici	FLANGIA										FORATURA			CODICE
	D mm	d mm	d ₁ mm	d ₂ mm	b mm	c mm	g mm	h ₁ mm	h ₂ mm	h ₃ mm	N. fori	f mm	a mm	
1/2	95	22	21	14	15	35	10	53	23	23	4	16	67	A RICHIEFS
3/4	118	28	27	19	16	43	11	58	26	26	4	19	83	A RICHIEFS
1	124	35	34	24	18	51	13	62	27	27	4	19	89	A RICHIEFS
1 1/4	133	43	42	33	21	64	14	67	29	29	4	19	99	A RICHIEFS
1 1/2	156	50	48	38	23	73	16	70	32	32	4	23	115	A RICHIEFS
2	165	62	60	49	26	93	18	73	37	37	8	19	127	A RICHIEFS
2 1/2	191	75	73	59	29	105	19	80	42	42	8	23	150	A RICHIEFS
3	210	91	89	74	32	127	21	83	46	46	8	23	169	A RICHIEFS
4	273	116	114	97	39	158	-	102	54	54	8	26	216	A RICHIEFS
5	330	144	141	122	45	186	-	115	61	61	8	29	267	A RICHIEFS
6	356	171	168	146	48	216	-	118	67	67	12	29	293	A RICHIEFS
8	419	222	219	194	56	270	-	134	77	77	12	32	350	A RICHIEFS
10	508	276	273	248	64	324	-	153	86	111	16	35	432	A RICHIEFS
12	559	327	324	298	67	381	-	156	93	118	20	35	489	A RICHIEFS
14	603	359	356		70	413	-	165	94	127	20	38	527	A RICHIEFS
16	686	410	406		77	470	-	178	107	140	20	42	604	A RICHIEFS
18	743	462	457		83	534	-	184	118	153	20	45	654	A RICHIEFS
20	813	513	508		89	585	-	191	127	165	24	45	724	A RICHIEFS
24	940	616	610		102	693	-	204	140	184	24	51	839	A RICHIEFS

Deve essere
precisato
dal cliente